

Distance Learning

Enrollment, Grades and Survey Results 1999-2000

May 2001

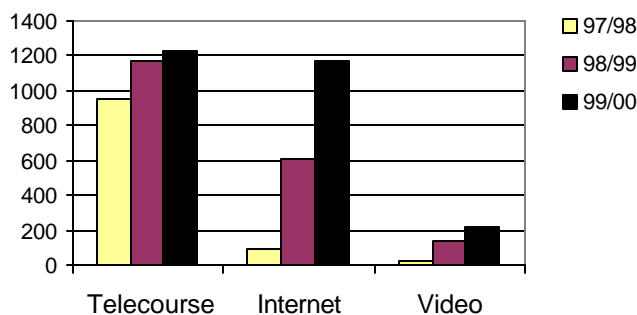
In order to make college courses accessible to students who have difficulty attending traditional on-campus classes, Del Mar College offers three types of distance learning courses: telecourses, internet courses and interactive video courses. Telecourses have been offered at Del Mar College since 1985 and enrollments have steadily increased each year. Internet courses were first offered in the Spring of 1998, and the first videoconferencing course was offered in the Fall of 1997. Enrollments in both internet and video-conferencing have increased greatly since their inception. Increases in total enrollments through distance learning are expected to continue as these alternative delivery methods become more common, diverse, and effective.

It is expected with increased access and use of PC's and number and variety of course offerings, internet enrollments will surpass the enrollments in telecourses. Interactive video courses require students to be on-campus at regularly scheduled times and offer less personal flexibility than other distance learning options. Growth in interactive video enrollments and course offerings will depend more on partnership agreements between other participating institutions (Coastal Bend College and Victoria College) and less on the student's need for a flexible schedule for learning.

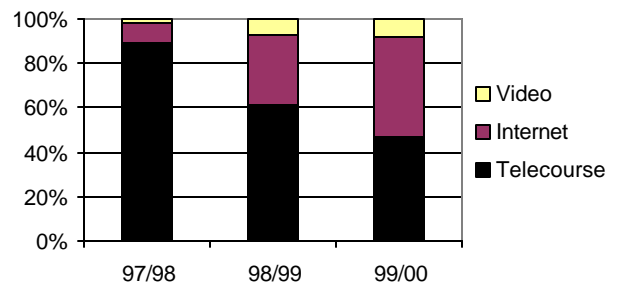
Enrollments

Distance learning enrollments for the 1999/00 year totaled 2,654, a 27% increase from the previous year. The 1999/00 annual distance learning enrollments were 12 percent of the total enrollment for which there were corresponding classroom sections. The number of students electing to enroll in internet courses has nearly doubled in the past year and is nearing the number of students enrolled in telecourses. The total number of distance learning courses offered in 1999/00 was 47, an increase of 26 percent from 35 courses offered in 1998/99. There were 16 telecourses offered in 1999/00, two more than the previous year, and internet course offerings have increased from 13 in 1998/99 to 24 in 1999/00. There were 8 interactive video course taught in both 1998/99 and 1999/00.

Annual Distance Learning Enrollments by Type



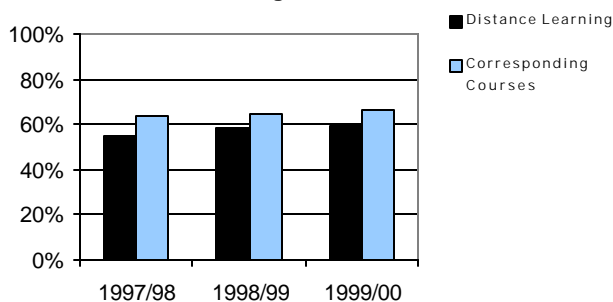
Annual Enrollments by Type as Percent of Total Distance Learning Enrollments



Grades

Successful completion (grade of A, B, C, or D) for distance learning courses has always lagged behind classroom sections of the same course by 10 or more percentage points; however, recent years have seen the gap decrease to just 7 percentage points difference for the 1999/00 year. The 1999/00 passing rate (96%) for interactive video is higher than other distance learning (58% internet and 54% telecourse) methods and higher than the overall college passing rate of 73 percent. The gap between withdrawal rates for distance learning students compared to students in corresponding courses and the overall college level course rate has also decreased in recent years. In 1999/00 there was a 4 percentage point difference between the withdrawal rate for distance learning courses and the corresponding classroom sections and an 8 percentage point difference compared to all college level courses. Interactive video students' withdrawal rate is very low compared to all other groups and may be a result of this type of learning taking place at regularly scheduled times within the classroom for programs that are have selective admissions and are highly competitive.

**Distance Learning Grade Comparison
Passing Rates**



Withdrawal Rates

	1997/98	1998/99	1999/00
Interactive Video	4%	6%	2%
Internet	23%	28%	25%
Telecourse	33%	26%	26%
All Distance Learning	31%	26%	24%
Corresponding Course	22%	21%	20%
All College Level	17%	17%	16%

Distance Learning Student Survey Results

At the conclusion of each semester, a Distance Learning Student Survey is mailed to all students enrolled in distance learning courses. Students are given the opportunity to complete one survey for each course he or she is enrolled. With 396 surveys returned, the overall response rate for the 1999/00 survey was 15 percent, a 2 percent decrease from the previous year, however, typical of what can be expected for a mailed survey. Beginning the 2001/02 academic year, the Distance Learning Student Survey will be administered via the web as an on-line survey and return rates are expected to improve.

Profile of Survey Respondents

- 67% said this was the first distance learning course they have taken
- 77% were female
- 35% were age 18-25; 30% were age 26-35
- 57% were employed full-time
- 57% have at least one dependent child at home
- 31% were enrolled in 12 or more semester credit hours
- 57% have completed more than 30 semester credit hours
- 91% expected to pass the distance learning course
- 64% registered via Pronto and 5% used late registration
- 72% said they would recommend distance learning to a friend.

Why Students Enroll in Distance Learning Courses

When asked why they decided to enroll in the distance learning section of a course, 76 percent of students enrolled in an internet course said they prefer the internet course method and 45 percent thought it would be easier than the classroom section. Of the students enrolled in telecourses, 67 percent reported that their busy schedules prevent them from taking on-campus courses, and 36 percent reported that it was the only section open that would fit their schedule. Of the students enrolled in interactive video courses, 55 percent reported that it was the only section open, and many wrote comments that they had no choice in the decision regarding the video course.

Benefit of Additional Services

A section of questions on the survey asked students if they would have found several different distance learning services to be of either much benefit, some benefit, or no benefit. The majority (50% or more) of students reported they would have found some or much benefit from teacher conferences, review tapes, more study sessions or on-site workshops, and more information prior to enrollment.

Rating of Distance Learning Components and Resources

Students enrolled in telecourses and internet courses rated the components of those delivery methods more positive than did students enrolled in interactive video courses.

Percent of Students who Rated Distance Learning Components and Resources as Excellent or Good

	Telecourses	Internet	IA Video
TV Programs	79%	N/A	N/A
Textbooks	90%	78%	73%
Studyguides	71%	N/A	35%
Assignments	84%	N/A	45%
faculty/staff help	82%	77%	36%
Tests/exams	83%	83%	34%
Library facilities	90%	N/A	68%
English lab	93%	N/A	64%
Nurse lab	N/A	N/A	47%
WebCT Server	N/A	85%	N/A
Chatrooms	N/A	62%	N/A
Web pages	N/A	87%	N/A
E-mail	N/A	87%	N/A
Support CD/ROM	N/A	63%	N/A

*Carol LaRue, Research Associate
Institutional Research and Effectiveness*

For additional information on Distance Learning, please contact Don Tyler, Assistance Dean, at Del Mar College, at (361)698-1701. For additional information, or to view the data tables, please see our website <http://delmar.edu/IRE/index.htm> or call the Office of Institutional Research & Effectiveness at (316)698-1207.

Grade Distribution Comparisons for Distance Learning and Classroom Instruction

		Total Grades	Percent Passing (A-D)	Percent Failure (F, WF)	Percent Withdrawal	Percent Incomplete
Fall 1999						
Interactive Video		151	96.0%	2.0%	2.0%	0.0%
Internet		365	52.3%	12.9%	30.4%	4.4%
Telecourse		465	53.5%	15.7%	29.2%	1.5%
Distance Learning sections		981	59.6%	12.5%	25.5%	2.3%
Corresponding classroom sections		6,486	64.1%	10.6%	19.9%	5.4%
All college-level		25,014	72.7%	9.2%	16.2%	1.9%
BIOL 1308	TV: Classroom:	11 0	27.3%	36.4%	36.4%	0.0%
BIOL 1408	TV: Classroom:	14 95	71.4% 49.5%	0.0% 37.9%	28.6% 12.6%	0.0% 0.0%
BUSI 1301	TV: Classroom:	23 184	56.5% 70.1%	8.7% 4.9%	21.7% 24.5%	13.0% 0.5%
C R 717	Internet: Classroom:	7 17	42.9% 41.2%	57.1% 23.5%	0.0% 35.3%	0.0% 0.0%
CHEM 2323	Video: Classroom:	7 18	71.4% 50.0%	28.6% 5.6%	0.0% 44.4%	0.0% 0.0%
COSC 1301	Internet: Classroom:	33 166	63.6% 72.3%	12.1% 6.6%	24.2% 20.5%	0.0% 0.6%
ENGL 0307	Internet: Classroom:	8 398	25.0% 44.5%	0.0% 0.0%	50.0% 17.3%	25.0% 38.2%
ENGL 1301	Internet: Classroom:	39 1,476	48.7% 59.9%	20.5% 10.2%	28.2% 20.8%	2.6% 9.1%
ENGL 1301	TV: Classroom:	51 1,476	45.1% 59.9%	17.6% 10.2%	35.3% 20.8%	2.0% 9.1%
ENGL 1302	Internet: Classroom:	55 599	38.2% 57.3%	7.3% 9.5%	41.8% 28.9%	12.7% 4.3%
ENGL 1302	TV: Classroom:	46 599	41.3% 57.3%	23.9% 9.5%	32.6% 28.9%	2.2% 4.3%
ENGL 2311	Internet: Classroom:	16 0	75.0%	12.5%	12.5%	0.0%
ENGL 2327	Internet: Classroom:	31 86	77.4% 66.3%	3.2% 4.7%	19.4% 26.7%	0.0% 2.3%
GOVT 2301	TV: Classroom:	60 435	63.3% 85.5%	11.7% 7.4%	25.0% 7.1%	0.0% 0.0%
GOVT 2302	TV: Classroom:	47 196	59.6% 76.5%	17.0% 9.2%	23.4% 14.3%	0.0% 0.0%

Grade Distribution Comparisons for Distance Learning and Classroom Instruction

		Total Grades	Percent Passing (A-D)	Percent Failure (F, WF)	Percent Withdrawal	Percent Incomplete
Fall 1999 Continued						
HIST 1301	TV:	71	46.5%	23.9%	28.2%	1.4%
	Classroom:	897	57.2%	16.3%	26.1%	0.4%
HIST 1302	TV:	63	50.8%	20.6%	28.6%	0.0%
	Classroom:	251	59.0%	15.1%	25.9%	0.0%
ITNW 1325	Internet:	6	66.7%	16.7%	0.0%	16.7%
	Classroom:	42	83.3%	0.0%	7.1%	9.5%
ITNW 1337	Internet:	18	44.4%	16.7%	38.9%	0.0%
	Classroom:	0				
ITSC 1301	Internet:	24	50.0%	0.0%	45.8%	4.2%
	Classroom:	286	61.2%	19.2%	19.2%	0.3%
ITSE 2449	Internet:	12	41.7%	25.0%	25.0%	8.3%
	Classroom:	19	73.7%	15.8%	10.5%	0.0%
ITSW 1311	Internet:	18	66.7%	5.6%	27.8%	0.0%
	Classroom:	0				
MRKG 1311	TV:	10	60.0%	10.0%	30.0%	0.0%
	Classroom:	21	81.0%	0.0%	19.0%	0.0%
MUSI 1306	Internet:	32	37.5%	18.8%	43.8%	0.0%
	Classroom:	127	74.8%	11.8%	12.6%	0.8%
N S 410	Video:	78	94.9%	1.3%	3.8%	0.0%
	Classroom:	0				
N S 411	Video:	66	100.0%	0.0%	0.0%	0.0%
	Classroom:	0				
PSYC 2301	TV:	42	64.3%	0.0%	35.7%	0.0%
	Classroom:	1,021	72.9%	9.8%	15.1%	2.3%
PSYC 2301	Internet:	26	53.8%	0.0%	34.6%	11.5%
	Classroom:	1,021	72.9%	9.8%	15.1%	2.3%
RELE 1301	Internet:	15	60.0%	26.7%	13.3%	0.0%
	Classroom:	15	80.0%	6.7%	13.3%	0.0%
RELE 1311	Internet:	14	35.7%	42.9%	21.4%	0.0%
	Classroom:	0				
RELE 2301	Internet:	11	72.7%	0.0%	27.3%	0.0%
	Classroom:	9	77.8%	0.0%	22.2%	0.0%
SPAN 1411	TV:	27	63.0%	3.7%	29.6%	3.7%
	Classroom:	128	81.3%	3.1%	14.1%	1.6%

Grade Distribution Comparisons for Distance Learning and Classroom Instruction

		Total Grades	Percent Passing (A-D)	Percent Failure (F, WF)	Percent Withdrawal	Percent Incomplete
Spring 2000						
Interactive Video		21	95.2%	0.0%	4.8%	0.0%
Internet		481	57.0%	8.5%	25.4%	9.1%
Telecourse		491	48.9%	20.2%	27.5%	3.5%
Distance Learning sections		993	53.8%	14.1%	26.0%	6.1%
Corresponding classroom sections		5,858	62.2%	11.1%	22.2%	4.6%
All college-level		23,215	69.7%	8.8%	18.5%	3.0%
B T 303M	Internet	16	56.3%	12.5%	25.0%	6.3%
	Classroom:	0				
BIOL 1308	TV	35	37.1%	25.7%	37.1%	0.0%
	Classroom:	0				
BIOL 1309	TV	16	81.3%	12.5%	6.3%	0.0%
	Classroom:	0				
BIOL 1408	TV	11	27.3%	54.5%	18.2%	0.0%
	Classroom:	60	50.0%	35.0%	15.0%	0.0%
BMGT 1303	TV	11	54.5%	27.3%	18.2%	0.0%
	Classroom:	38	68.4%	13.2%	18.4%	0.0%
C R 717	Internet	6	0.0%	0.0%	0.0%	100.0%
	Classroom:	17	47.1%	0.0%	47.1%	5.9%
CHEM 2325	Video	6	100.0%	0.0%	0.0%	0.0%
	Classroom:	7	71.4%	0.0%	28.6%	0.0%
COSC 1301	Internet	30	66.7%	3.3%	30.0%	0.0%
	Classroom:	131	74.8%	7.6%	16.0%	1.5%
ENGL 1301	Internet	34	38.2%	29.4%	29.4%	2.9%
	Classroom:	807	53.5%	8.7%	34.0%	3.8%
ENGL 1301	TV	47	40.4%	19.1%	19.1%	21.3%
	Classroom:	807	53.5%	8.7%	34.0%	3.8%
ENGL 1302	Internet	49	63.3%	2.0%	32.7%	2.0%
	Classroom:	1,134	55.4%	7.1%	20.5%	17.0%
ENGL 1302	TV	50	42.0%	30.0%	24.0%	4.0%
	Classroom:	1,134	55.4%	7.1%	20.5%	17.0%
ENGL 2311	Internet	15	60.0%	20.0%	20.0%	0.0%
	Classroom:	0				
ENGL 2328	Internet	28	71.4%	7.1%	14.3%	7.1%
	Classroom:	93	74.2%	1.1%	20.4%	4.3%
GOVT 2301	TV	56	55.4%	16.1%	25.0%	3.6%
	Classroom:	370	72.4%	11.4%	15.7%	0.5%
GOVT 2302	TV	55	56.4%	18.2%	23.6%	1.8%
	Classroom:	334	79.3%	9.6%	10.8%	0.3%

Grade Distribution Comparisons for Distance Learning and Classroom Instruction

		Total Grades	Percent Passing (A-D)	Percent Failure (F, WF)	Percent Withdrawal	Percent Incomplete
Spring 2000 Continued						
HIST 1301	TV Classroom:	67 606	34.3% 55.0%	28.4% 19.1%	37.3% 25.6%	0.0% 0.3%
HIST 1302	TV Classroom:	65 524	58.5% 62.4%	16.9% 10.7%	24.6% 25.6%	0.0% 1.3%
IMED 1305	Internet Classroom:	23 31	52.2% 54.8%	4.3% 6.5%	39.1% 25.8%	4.3% 12.9%
ITNW 1325	Internet Classroom:	50 24	56.0% 79.2%	2.0% 0.0%	18.0% 12.5%	24.0% 8.3%
ITNW 1337	Internet Classroom:	19 15	47.4% 60.0%	10.5% 13.3%	42.1% 26.7%	0.0% 0.0%
ITSC 1301	Internet Classroom:	45 294	48.9% 51.0%	11.1% 25.5%	40.0% 23.5%	0.0% 0.0%
ITSE 2449	Internet Classroom:	11 15	63.6% 73.3%	9.1% 0.0%	27.3% 26.7%	0.0% 0.0%
ITSW 1311	Internet Classroom:	9 18	77.8% 83.3%	0.0% 5.6%	22.2% 11.1%	0.0% 0.0%
MUSI 1306	Internet Classroom:	41 152	58.5% 65.1%	14.6% 3.3%	24.4% 27.0%	2.4% 4.6%
NS 404	Video Classroom:	15 0	93.3%	0.0%	6.7%	0.0%
PSYC 2301	Internet Classroom:	34 747	44.1% 68.5%	14.7% 13.9%	26.5% 16.7%	14.7% 0.8%
PSYC 2301	TV Classroom:	37 747	56.8% 68.5%	0.0% 13.9%	43.2% 16.7%	0.0% 0.8%
PSYC 2314	Internet Classroom:	28 229	71.4% 74.2%	3.6% 9.2%	14.3% 14.8%	10.7% 1.7%
RELE 1301	Internet Classroom:	18 0	66.7%	0.0%	11.1%	22.2%
RELE 1311	Internet Classroom:	14 0	57.1%	0.0%	14.3%	28.6%
RELE 2301	Internet Classroom:	11 0	72.7%	0.0%	0.0%	27.3%
SPAN 1411	TV Classroom:	21 129	42.9% 71.3%	19.0% 1.6%	38.1% 25.6%	0.0% 1.6%
SPAN 1412	TV Classroom:	20 83	60.0% 69.9%	10.0% 4.8%	20.0% 22.9%	10.0% 2.4%

Grade Distribution Comparisons for Distance Learning and Classroom Instruction

		Total Grades	Percent Passing (A-D)	Percent Failure (F, WF)	Percent Withdrawal	Percent Incomplete
Summer 2000						
Interactive Video		42	95.2%	0.0%	2.4%	2.4%
Internet		364	65.4%	6.0%	22.3%	6.3%
Telecourse		270	63.7%	13.3%	18.5%	4.4%
Distance Learning sections		676	66.6%	8.6%	19.5%	5.3%
Corresponding classroom sections		2,275	79.5%	6.7%	11.4%	2.3%
All college-level		9,547	83.2%	5.0%	9.0%	2.7%
BIOL 1308	TV	21	47.6%	42.9%	9.5%	0.0%
	Classroom:	0				
BIOL 1309	TV	17	58.8%	17.6%	23.5%	0.0%
	Classroom:	0				
COSC 1301	Internet:	22	95.5%	0.0%	4.5%	0.0%
	Classroom:	32	87.5%	3.1%	9.4%	0.0%
CRIJ 2314	Internet	1	100.0%	0.0%	0.0%	0.0%
	Classroom:	14	85.7%	0.0%	7.1%	7.1%
ECON 2301	TV	8	75.0%	25.0%	0.0%	0.0%
	Classroom:	128	82.0%	0.8%	15.6%	1.6%
ENGL 1302	Internet	66	77.3%	1.5%	19.7%	1.5%
	Classroom:	231	71.4%	5.2%	17.7%	5.6%
GOVT 2301	TV	62	71.0%	3.2%	21.0%	4.8%
	Classroom:	234	91.5%	4.3%	3.8%	0.4%
GOVT 2302	TV	57	78.9%	8.8%	8.8%	3.5%
	Classroom:	248	94.4%	1.2%	3.6%	0.8%
HIST 1301	TV	56	51.8%	12.5%	32.1%	3.6%
	Classroom:	316	80.7%	8.9%	10.4%	0.0%
HIST 1302	TV	36	55.6%	25.0%	13.9%	5.6%
	Classroom:	267	82.4%	7.9%	9.4%	0.4%
ITNW 1325	Internet	29	62.1%	0.0%	10.3%	27.6%
	Classroom:	36	86.1%	0.0%	2.8%	11.1%
ITNW 1337	Internet	9	77.8%	0.0%	0.0%	22.2%
	Classroom:	0				

Grade Distribution Comparisons for Distance Learning and Classroom Instruction

		Total Grades	Percent Passing (A-D)	Percent Failure (F, WF)	Percent Withdrawal	Percent Incomplete
Summer 2000 Continued						
ITSC 1301	Internet	25	52.0%	4.0%	36.0%	8.0%
	Classroom:	85	74.1%	5.9%	15.3%	4.7%
ITSC 2286	Internet	15	100.0%	0.0%	0.0%	0.0%
	Classroom:	0				
ITSW 1311	Internet	5	40.0%	20.0%	20.0%	20.0%
	Classroom:	0				
MATH 1314	Internet	1	100.0%	0.0%	0.0%	0.0%
	Classroom:	379	60.7%	15.8%	21.1%	2.4%
MUSI 1306	Internet	74	45.9%	17.6%	35.1%	1.4%
	Classroom:	69	92.8%	4.3%	2.9%	0.0%
NS 101	Video	14	92.9%	0.0%	0.0%	7.1%
	Classroom:	0				
NS 310	Video	28	96.4%	0.0%	3.6%	0.0%
	Classroom:	0				
PSYC 2301	TV	21	66.7%	4.8%	14.3%	14.3%
	Classroom:	175	76.6%	4.0%	10.3%	9.1%
PSYC 2301	Internet	42	50.0%	2.4%	38.1%	9.5%
	Classroom:	175	76.6%	4.0%	10.3%	9.1%
PSYC 2314	Internet	44	70.5%	4.5%	18.2%	6.8%
	Classroom:	61	88.5%	3.3%	8.2%	0.0%
RELE 1301	Internet	8	62.5%	0.0%	25.0%	12.5%
	Classroom:	0				
RELE 1311	Internet	8	75.0%	12.5%	12.5%	0.0%
	Classroom:	0				
RELE 2301	Internet	7	85.7%	0.0%	14.3%	0.0%
	Classroom:	0				

Table 2
Distance Learning Survey Response Rate

	Fall 1999			Spring 2000			Summer 2000			Annual Total		
	Enrolled	Returned Survey	% Returned	Enrolled	Returned Survey	% Returned	Enrolled	Returned Survey	% Returned	Enrolled	Returned Survey	% Returned
Telecourses												
BIOL 1308	14	1	7%	35	7	20%	21	2	10%	70	10	14%
BIOL 1309				16	3	19%	17	1	6%	33	4	12%
BIOL 1408	14	0	-	11	0	-				25	0	-
BMGT 1303				11	4	36%				11	4	36%
BUSI 1301	23	3	13%							23	3	13%
ECON 1311							8	0	-	8	0	-
ENGL 1301	51	6	12%	47	6	13%				98	12	12%
ENGL 1302	46	11	24%	50	9	18%				96	20	21%
GOVT 2301	60	12	20%	56	7	13%	62	15	24%	178	34	19%
GOVT 2302	47	7	15%	55	9	16%	57	12	21%	159	28	18%
HIST 1301	71	7	10%	67	7	10%	56	9	16%	194	23	12%
HIST 1302	63	11	17%	65	13	20%	36	4	11%	164	28	17%
MRKG 1311	10	1	10%							10	1	10%
PSYC 2301	42	0	-	37	2	5%	21	4	19%	100	6	6%
SPAN 1411	27	3	11%	21	6	29%				48	9	19%
SPAN 1412				20	0	-				20	0	-
Total	468	62	13%	491	73	15%	278	47	17%	1,237	182	15%
Interactive Video												
CHEM 2323	7	1	14%							7	1	14%
CHEM 2325				6	0	-				6	0	-
NS 101							14	0	-	14	0	-
NS 310							28	4	14%	28	4	14%
NS 404				15	2	13%				15	2	13%
NS 410	78	13	17%							78	13	17%
NS 411	66	13	20%	15	0	-				81	13	16%
NS 412				16	0	-				16	0	-
Total	151	27	18%	52	2	4%	42	4	10%	245	33	13%

Table 2
Distance Learning Survey Response Rate

	Fall 1999			Spring 2000			Summer 2000			Annual Total		
	Enrolled	Returned Survey	% Returned	Enrolled	Returned Survey	% Returned	Enrolled	Returned Survey	% Returned	Enrolled	Returned Survey	% Returned
Internet												
COSC 1301	33	5	15%	30	7	23%	22	4	18%	85	16	19%
CR 717	7	1	14%	6	2	33%				13	3	23%
CRIJ 2314							1	0	-	1	0	-
ENGL 307	8	3	38%							8	3	38%
ENGL 1301	39	9	23%	34	3	9%				73	12	16%
ENGL 1302	55	3	5%	33	3	9%	66	11	17%	154	17	11%
ENGL 2311	16	4	25%	15	7	47%				31	11	35%
ENGL 2327	31	3	10%							31	3	10%
ENGL 2328				28	5	18%				28	5	18%
IMED 1305				23	5	22%				23	5	22%
ITNW 1325				44	8	18%	29	2	7%	73	10	14%
ITNW 1337	18	2	11%	19	3	16%	9	1	11%	46	6	13%
ITSC 1301	24	5	21%	45	5	11%	25	3	12%	94	13	14%
ITSC 2286							15	0	-	15	0	-
ITSE 2449	12	1	8%	11	2	18%				23	3	13%
ITSW 1311	18	2	11%	9	2	22%	5	3	60%	32	7	22%
MATH 1314							1	0	-	1	0	-
MUSI 1306	34	7	21%	41	11	27%	76	14	18%	151	32	21%
POFT 1309				16	4	25%				16	4	25%
PSYC 2301	26	3	12%	34	4	12%	38	4	11%	98	11	11%
PSYC 2314				28	3	11%	44	6	14%	72	9	13%
RELE 1301	15	0	-	18	3	17%	8	3	38%	41	6	15%
RELE 1311	14	0	-	14	1	7%	8	4	50%	36	5	14%
RELE 2301	11	0	-	11	0	-	7	0	-	29	0	-
Total	361	48	13%	459	78	17%	354	55	16%	1,174	181	15%
Total Distance Learning 1999/00	980	137	14%	####	153	15%	674	106	16%	2,656	396	15%

Distance Learning Student Survey Responses Fall 1999, Spring and Summer 2000

	Fall 1999	Spring 2000	Summer 2000	Combined 2000
Total Responses	137	153	106	396
Gender				
Male	22.2%	23.6%	23.0%	23.0%
Female	77.8%	76.4%	77.0%	77.0%
Age				
18 to 25 years	32.8%	36.9%	35.0%	35.0%
26 to 35 years	30.6%	26.8%	35.0%	30.3%
36 to 45 years	26.1%	25.5%	19.0%	24.0%
46 to 55 years	9.0%	8.7%	7.0%	8.4%
56 to 65 years	1.5%	2.0%	4.0%	2.3%
66 years or older	0.0%	0.0%	0.0%	0.0%
Dependent Children at Home				
None	50.7%	39.1%	39.8%	43.4%
At least one child under 18	46.3%	53.6%	58.2%	52.2%
All children over 18 years	2.9%	7.3%	2.0%	4.4%
Employment Status				
Employed, more than 35 hours per week	59.1%	55.3%	55.0%	56.5%
Employed, part-time	19.7%	16.0%	17.0%	17.5%
Homemaker	6.8%	16.0%	20.0%	13.9%
Unemployed, seeking employment	6.1%	8.7%	2.0%	6.0%
Not seeking employment	8.3%	4.0%	6.0%	6.0%
Semester Credit Hours Enrolled				
1 to 6 hours	36.8%	37.2%	54.5%	41.6%
7 to 11 hours	29.4%	20.9%	32.7%	27.0%
12 or more hours	33.8%	41.9%	12.9%	31.4%
Semester Credit Hours Completed				
None	3.7%	3.4%	1.0%	2.9%
1 - 15 hrs	18.4%	24.2%	19.2%	20.8%
16 - 30 hrs	19.1%	16.8%	23.2%	19.3%
31 - 45 hrs	16.9%	16.1%	13.1%	15.6%
more than 45 hrs	41.9%	39.6%	43.4%	41.4%
First Distance Learning Course Taken				
Yes	62.7%	70.7%	68.0%	67.2%
No	37.3%	29.3%	32.0%	32.8%
Expected Grade				
Passing (A-D)	90.4%	87.0%	95.9%	90.5%
Failing (F or WF)	3.0%	4.8%	1.0%	3.1%
Withdrawal	5.9%	5.5%	3.0%	5.0%
Incomplete	0.7%	2.7%	0.0%	1.3%
Method of Registration for Distance Learning Course				
Pronto	69.2%	59.3%	63.6%	63.9%
Regular Arena	27.1%	36.0%	30.3%	31.4%
Late Registration	3.8%	4.7%	6.1%	4.7%
Would Recommend a Distance Learning Course to a Friend				
Yes	64.4%	70.5%	85.0%	72.2%
No	20.0%	13.0%	7.0%	13.9%
Maybe	15.6%	16.4%	8.0%	13.9%
Frequent Majors Enrolled				
Registered Nurse Education	18.5%	4.8%	4.8%	9.4%
Business Administration	14.8%	8.7%	11.9%	11.6%
Undeclared	1.9%	7.9%	7.1%	5.7%
Pre-Nursing	3.7%	2.4%	6.0%	3.8%
Microcomputers for Business	1.9%	7.9%	2.4%	4.4%
Computer Operations	3.7%	4.0%	3.6%	3.8%
Paraprofessional Accounting	0.0%	5.6%	6.0%	3.8%
Early Childhood Emphasis	2.8%	2.4%	7.1%	3.8%
Liberal Arts	4.6%	0.8%	6.0%	3.5%
Psychology	1.9%	4.8%	3.6%	3.5%

Telecourse Student Survey Responses Fall 1999, Spring and Summer 2000

	Fall 1999	Spring 2000	Summer 2000	Combined Total
Total Responses	62	73	47	182
Gender				
Male	20.0%	13.0%	21.3%	17.6%
Female	80.0%	87.0%	78.7%	82.4%
Age				
18 to 25 years	35.6%	50.0%	41.3%	42.9%
26 to 35 years	27.1%	27.1%	41.3%	30.9%
36 to 45 years	30.5%	15.7%	13.0%	20.0%
46 to 55 years	6.8%	4.3%	0.0%	4.0%
56 to 65 years	0.0%	2.9%	4.3%	2.3%
66 years or older	0.0%	0.0%	0.0%	0.0%
Dependent Children at Home				
None	41.0%	39.4%	47.8%	42.1%
At least one child under 18	57.4%	52.1%	52.2%	53.9%
All children over 18 years	1.6%	8.5%	0.0%	3.9%
Employment Status				
Employed, more than 35 hours per week	63.3%	55.7%	48.9%	56.5%
Employed, part-time	15.0%	18.6%	19.1%	17.5%
Homemaker	10.0%	18.6%	21.3%	16.4%
Unemployed, seeking employment	8.3%	4.3%	2.1%	5.1%
Not seeking employment	3.3%	2.9%	8.5%	4.5%
Semester Credit Hours Enrolled				
1 to 6 hours	50.8%	35.7%	61.7%	47.8%
7 to 11 hours	18.0%	21.4%	27.7%	21.9%
12 or more hours	31.1%	42.9%	10.6%	30.3%
Semester Credit Hours Completed				
None	6.6%	2.9%	0.0%	3.4%
1 - 15 hrs	14.8%	29.6%	10.6%	19.1%
16 - 30 hrs	24.6%	22.9%	31.9%	25.8%
31 - 45 hrs	24.6%	10.0%	23.4%	18.5%
more than 45 hrs	29.5%	35.7%	34.0%	33.1%
First Telecourse taken				
Yes	43.3%	61.4%	60.9%	55.1%
No	56.7%	38.6%	39.1%	44.9%
Expected Grade				
Passing (A-D)	88.5%	83.9%	95.7%	88.8%
Failing (F or WF)	3.3%	7.2%	2.1%	4.6%
Withdrawal	6.6%	5.8%	2.1%	5.1%
Incomplete	1.6%	2.9%	0.0%	1.7%
Method of Registration for Telecourse				
Pronto	63.3%	61.4%	60.9%	61.9%
Regular Arena	35.0%	34.3%	32.6%	34.1%
Late Registration	1.7%	4.3%	6.5%	4.0%
Would Recommend a Telecourse to a Friend				
Yes	78.7%	63.8%	89.1%	75.6%
No	3.3%	13.0%	8.7%	8.5%
Maybe	18.0%	23.3%	2.2%	15.9%
Frequent Majors Enrolled				
Registered Nurse Education	5.7%	3.2%	0.0%	3.2%
Business Administration	20.8%	7.9%	12.5%	13.5%
Undeclared	3.8%	12.7%	7.5%	8.3%
Liberal Arts	7.5%	0.0%	10.0%	5.1%
Psychology	1.9%	7.9%	5.0%	5.1%
ISD: Reading	3.8%	3.2%	5.0%	3.8%
Early Childhood Emphasis	3.8%	3.2%	12.5%	5.8%
Paraprofessional Accountant	0.0%	9.5%	5.0%	5.1%
Pre-Nursing	3.8%	4.8%	5.0%	4.5%

Internet Student Survey Responses Fall 1999, Spring and Summer 2000

	Fall 1999	Spring 2000	Summer 2000	Combined Total
Total Responses	48	78	55	181
Gender				
Male	31.3%	32.5%	24.5%	30.2%
Female	68.8%	67.5%	75.5%	69.8%
Age				
18 to 25 years	35.4%	26.0%	32.0%	31.5%
26 to 35 years	27.1%	26.0%	28.0%	26.0%
36 to 45 years	25.0%	33.8%	24.0%	28.7%
46 to 55 years	8.3%	13.0%	12.0%	11.0%
56 to 65 years	4.2%	1.3%	4.0%	2.8%
66 years or older				
Dependent Children at Home				
None	56.3%	39.7%	33.3%	42.5%
At least one child under 18	41.7%	53.8%	64.6%	53.6%
All children over 18 years	2.1%	6.4%	2.1%	3.9%
Employment Status				
Employed, more than 35 hours per week	44.7%	55.1%	61.1%	54.2%
Employed, part-time	27.7%	12.8%	16.7%	17.9%
Homemaker	6.4%	14.1%	18.5%	13.4%
Unemployed, seeking employment	6.4%	12.8%	1.9%	7.8%
Not seeking employment	14.9%	5.1%	1.9%	6.7%
Semester Credit Hours Enrolled				
1 to 6 hours	35.4%	39.0%	47.3%	40.6%
7 to 11 hours	22.9%	22.1%	36.4%	26.7%
12 or more hours	41.7%	39.0%	16.4%	32.8%
Semester Credit Hours Completed				
None	2.1%	3.8%	1.9%	2.8%
1 - 15 hrs	31.3%	20.5%	26.4%	25.1%
16 - 30 hrs	18.8%	12.8%	20.8%	16.8%
31 - 45 hrs	16.7%	21.8%	3.8%	15.1%
more than 45 hrs	31.3%	41.0%	47.2%	40.2%
First Internet taken				
Yes	79.2%	78.2%	72.7%	76.8%
No	20.8%	21.8%	27.3%	23.2%
Expected Grade				
Passing (A-D)	87.1%	89.4%	96.1%	90.7%
Failing (F or WF)	4.3%	2.6%	0.0%	2.3%
Withdrawal	8.5%	5.3%	3.9%	5.8%
Incomplete	0.0%	2.7%	0.0%	1.2%
Method of Registration for Internet Course				
Pronto	59.6%	56.4%	64.8%	59.8%
Regular Arena	31.9%	38.5%	27.8%	33.5%
Late Registration	8.5%	5.1%	7.4%	6.7%
Would Recommend a Internet Course to a Friend				
Yes	77.1%	77.6%	81.1%	78.5%
No	10.4%	13.2%	5.7%	10.2%
Maybe	12.5%	9.2%	13.2%	11.3%
Frequent Majors Enrolled				
Business Administration	13.2%	9.7%	12.5%	11.4%
Computer Operations	10.5%	8.1%	7.5%	8.6%
Computer Programming	10.5%	6.5%	0.0%	5.7%
Microcomputers for Business	2.6%	14.5%	5.0%	8.6%
Undeclared	0.0%	3.2%	7.5%	3.6%
Kinesiology	7.9%	1.6%	2.5%	3.6%
Political Science	7.9%	0.0%	0.0%	2.1%
Paraprofessional Acct.	0.0%	1.6%	7.5%	2.9%
Registered Nurse	2.6%	3.2%	2.5%	2.9%
Criminal Justice	0.0%	6.5%	0.0%	2.9%

Interactive Video Student Survey Responses Fall 1999, Spring and Summer 2000

	Fall 1999	Spring 2000	Summer 2000	Combined 2000
Total Responses	27	2	4	33
Gender				
Male	11.1%	50.0%	25.0%	15.2%
Female	88.9%	50.0%	75.0%	84.8%
Age				
18 to 25 years	22.2%	0.0%	0.0%	18.2%
26 to 35 years	44.4%	50.0%	50.0%	45.5%
36 to 45 years	18.5%	50.0%	25.0%	21.3%
46 to 55 years	14.8%	0.0%	25.0%	15.2%
56 to 65 years	0.0%	0.0%	0.0%	0.0%
66 years or older	0.0%	0.0%	0.0%	0.0%
Dependent Children at Home				
None	63.0%	0.0%	25.0%	54.5%
At least one child under 18	29.6%	#####	50.0%	36.4%
All children over 18 years	7.4%	0.0%	25.0%	9.1%
Employment Status				
Employed, more than 35 hours per week	76.0%	50.0%	50.0%	71.0%
Employed, part-time	16.0%	50.0%	25.0%	19.4%
Homemaker	0.0%	0.0%	0.0%	0.0%
Unemployed, seeking employment	0.0%	0.0%	0.0%	0.0%
Not seeking employment	8.0%	0.0%	25.0%	9.7%
Semester Credit Hours Enrolled				
1 to 6 hours	7.4%	0.0%	0.0%	6.1%
7 to 11 hours	66.7%	0.0%	#####	66.7%
12 or more hours	25.9%	#####	0.0%	27.3%
Semester Credit Hours Completed				
None	0.0%	0.0%	0.0%	0.0%
1 - 15 hrs	3.7%	0.0%	0.0%	3.0%
16 - 30 hrs	7.4%	0.0%	0.0%	6.1%
31 - 45 hrs	0.0%	0.0%	0.0%	0.0%
more than 45 hrs	88.9%	#####	#####	90.9%
First Telecourse taken				
Yes	76.9%	#####	75.0%	78.1%
No	23.1%	0.0%	25.0%	21.9%
Expected Grade				
Passing (A-D)	#####	#####	#####	#####
Failing (F or WF)	0.0%	0.0%	0.0%	0.0%
Withdrawal	0.0%	0.0%	0.0%	0.0%
Incomplete	0.0%	0.0%	0.0%	0.0%
Method of Registration for Interactive Video Course				
Pronto	#####	#####	#####	#####
Regular Arena	0.0%	0.0%	0.0%	0.0%
Late Registration	0.0%	0.0%	0.0%	0.0%
Would Recommend a Interactive Video Course to a Friend				
Yes	7.7%	50.0%	#####	21.9%
No	76.9%	0.0%	0.0%	62.5%
Maybe	15.4%	50.0%	0.0%	15.6%
Frequent Majors Enrolled				
Registered Nurse Education	92.6%	#####	75.0%	90.9%
Pre-Nursing	3.7%	0.0%	25.0%	6.1%
Chemistry	3.7%	0.0%	0.0%	3.0%

Distance Learning Enrollment as a Proportion of the Total Course Enrollment

	Fall 1999 - Summer 2000			Previous Year 1998-99	Percent Change +/-
	Total Annual Enrollment	Distance Learning Course Enrollment	Percent Distance Learning	Percent Distance Learning	Percent Distance Learning
Telecourses					
BIOL 1308	70	70	100%	100%	0%
BIOL 1309	33	33	100%	Not offered	
BIOL 1408	206	25	12%	12%	0%
BMGT 1303	80	11	14%	15%	-1%
BUSI 1301	370	23	6%	9%	-3%
ECON 2301	618	8	1%	Not offered	
ENGL 1301	2,749	98	4%	3%	+1%
ENGL 1302	2,245	96	4%	5%	-1%
GOVT 2301	1,237	179	14%	14%	+1%
GOVT 2302	936	158	17%	16%	+1%
HIST 1301	2,058	195	9%	9%	+1%
HIST 1302	1,234	164	13%	15%	-2%
MRKG 1311	52	10	19%	40%	-21%
PSYC 2301	2,148	100	5%	5%	0%
SPAN 1411	383	48	13%	7%	+6%
SPAN 1412	202	20	10%	8%	+2%
Video					
CHEM 2323	36	7	19%	Not offered	
CHEM 2325	22	6	27%	Not offered	
N S 101	151	14	9%	12%	-3%
N S 310	136	28	21%	24%	-3%
N S 404	25	15	60%	66%	-6%
N S 410	143	78	55%	Not offered	
N S 411	120	66	55%	Not offered	
Internet					
COSC 1301	413	85	21%	Not offered	
CRIJ 2314	137	1	1%	Not offered	
C R 717	60	13	22%	41%	-19%
ENGL 0307	832	8	1%	1%	0%
ENGL 1301	2,749	73	3%	2%	+1%
ENGL 1302	2,245	170	8%	8%	0%
ENGL 2311	31	31	100%	100%	0%
ENGL 2327	165	31	19%	Not offered	
ENGL 2328	150	28	19%	Not offered	
IMED 1305	115	23	20%	Not offered	
ITNW 1325	187	85	45%	Not offered	
ITNW 1337	61	46	75%	Not offered	
ITSC 1301	759	94	12%	Not offered	
ITSC 2286	72	15	21%	Not offered	
ITSE 2449	57	23	40%	Not offered	
ITSW 1311	44	32	73%	Not offered	
MATH 1314	2,176	1	0%	Not offered	
MUSI 1306	495	151	31%	Not offered	
POFT 1309	27	16	59%	Not offered	
PSYC 2301	2,148	98	5%	5%	0%
PSYC 2314	577	72	12%	Not offered	
RELE 1301	56	41	73%	54%	+19%
RELE 1311	36	36	100%	60%	+40%
RELE 2301	38	29	76%	53%	+23%
Total	21,742	2,654	12%		

**Distance Learning Enrollment
Compared to Classroom Enrollment
1999-2000**

	Fall 1999 Enrollment			Spring 2000 Enrollment			Summer I & II 2000 Enrollment			Annual Enrollment			
	Classroom	Distance Learning	% Distance Learning	Classroom	Distance Learning	% Distance Learning	Classroom	Distance Learning	% Distance Learning	Total Enroll	Classroom	Distance Learning	% Distance Learning
Telecourses													
BIOL 1308	0	14	100.0%	0	35	100.0%	0	21	100.0%	70	0	70	100.0%
BIOL 1309	0	0	-	0	16	100.0%	0	17	100.0%	33	0	33	100.0%
BIOL 1408	95	14	12.8%	60	11	15.5%	26	0	-	206	181	25	12.1%
BMGT 1303	15	0	-	38	11	22.4%	16	0	-	80	69	11	13.8%
BUSI 1301	184	23	11.1%	122	0	-	41	0	-	370	347	23	6.2%
ECON 2301	265	0	0.0%	217	0	-	128	8	5.9%	618	610	8	1.3%
ENGL 1301	1,537	51	3.1%	807	47	5.3%	234	0	-	2,749	2,578	98	3.6%
ENGL 1302	612	46	6.5%	1,134	50	4.1%	233	0	-	2,245	1,979	96	4.3%
GOVT 2301	454	60	11.7%	370	57	13.3%	234	62	20.9%	1,237	1,058	179	14.5%
GOVT 2302	196	47	19.3%	334	54	13.9%	248	57	18.7%	936	778	158	16.9%
HIST 1301	942	71	7.0%	606	67	10.0%	315	57	15.3%	2,058	1,863	195	9.5%
HIST 1302	279	63	18.4%	524	65	11.0%	267	36	11.9%	1,234	1,070	164	13.3%
MRKG 1311	21	10	32.3%	21	0	-	0	0	-	52	42	10	19.2%
PSYC 2301	1,028	42	3.8%	747	37	4.5%	175	21	9.0%	2,148	1,950	100	4.7%
SPAN 1411	138	27	16.4%	128	21	14.1%	69	0	-	383	335	48	12.5%
SPAN 1412	31	0	-	83	20	19.4%	68	0	-	202	182	20	9.9%
Video													
CHEM 2323	18	7	28.0%	0	0	-	11	0	-	36	29	7	19.4%
CHEM 2325	0	0	-	7	6	46.2%	9	0	-	22	16	6	27.3%
N S 101	74	0	-	63	0	-	0	14	100.0%	151	137	14	9.3%
N S 310	54	0	-	54	0	-	0	28	100.0%	136	108	28	20.6%
N S 404	10	0	-	0	15	100.0%	0	0	-	25	10	15	60.0%
N S 410	0	78	100.0%	65	0	-	0	0	-	143	65	78	54.5%
N S 411	0	66	100.0%	54	0	-	0	0	-	120	54	66	55.0%
Internet													
C R 717	17	7	29.2%	17	6	26.1%	13	0	-	60	47	13	21.7%
COSC 1301	166	33	16.6%	131	30	18.6%	31	22	41.5%	413	328	85	20.6%
CRIJ 2314	52	0	-	70	0	-	14	1	-	137	136	1	0.7%
ENGL 0307	389	8	2.0%	330	0	-	105	0	-	832	824	8	1.0%
ENGL 1301	1,537	39	2.4%	807	34	3.8%	234	0	-	2,749	2,578	73	2.7%
ENGL 1302	612	55	7.7%	1,134	49	4.0%	233	66	22.1%	2,245	1,979	170	7.6%
ENGL 2311	0	16	100.0%	0	15	100.0%	0	0	-	31	0	31	100.0%
ENGL 2327	86	31	26.5%	0	0	-	48	0	-	165	134	31	18.8%
ENGL 2328	0	0	-	93	28	23.1%	29	0	0.0%	150	122	28	18.7%
IMED 1305	46	0	-	31	23	42.6%	15	0	-	115	92	23	20.0%
ITNW 1325	42	6	-	24	50	67.6%	36	29	44.6%	187	102	85	45.5%
ITNW 1337	0	18	100.0%	15	19	55.9%	0	9	100.0%	61	15	46	75.4%
ITSC 1301	286	24	7.7%	294	45	13.3%	85	25	22.7%	759	665	94	12.4%
ITSC 2286	30	0	-	27	0	-	0	15	100.0%	72	57	15	20.8%
ITSE 2449	19	12	38.7%	15	11	42.3%	0	0	-	57	34	23	40.4%
ITSW 1311	0	18	100.0%	12	9	42.9%	0	5	100.0%	44	12	32	72.7%
MATH 1314	941	0	-	815	0	-	419	1	0.2%	2,176	2,175	1	0.05%
MUSI 1306	124	34	21.5%	152	41	21.2%	68	76	52.8%	495	344	151	30.5%
POFT 1309	11	0	-	0	16	100.0%	0	0	-	27	11	16	59.3%
PSYC 2301	1,028	26	2.4%	747	34	4.2%	175	38	16.2%	2,148	1,950	98	4.6%
PSYC 2314	215	0	-	229	28	10.9%	61	44	41.9%	577	505	72	12.5%
RELE 1301	15	15	50.0%	0	18	100.0%	0	8	100.0%	56	15	41	73.2%
RELE 1311	0	14	100.0%	0	14	100.0%	0	8	100.0%	36	0	36	100.0%
RELE 2301	9	11	55.0%	0	11	100.0%	0	7	100.0%	38	9	29	76.3%
Total	8,401	986	10.5%	7,689	993	11.4%	2,998	675	18.4%	21,742	19,088	2,654	12.2%

**Distance Learning Enrollment
Compared to Classroom Enrollment
1998-1999**

Course	Fall 1998 Enrollment			Spring 1999 Enrollment			Summer I 1999 Enrollment			Summer II 1999 Enrollment			Annual Enrollment		
	Classroom	Distance Learning	% Distance Learning	Classroom	Distance Learning	% Distance Learning	Classroom	Distance Learning	% Distance Learning	Classroom	Distance Learning	% Distance Learning	Classroom	Distance Learning	% Distance Learning
BIOL 1108	2	0	-	1	0	-	0	8	100.0%	0	0	-	3	8	72.7%
BIOL 1308	0	10	100.0%	0	12	100.0%	0	11	100.0%	0	0	-	0	33	100.0%
BIOL 1408	98	0	-	84	0	-	15	26	63.4%	0	0	-	197	26	11.7%
BUSI 1301	167	32	16.1%	139	0	-	29	0	-	11	0	-	346	32	8.5%
C R 717	20	13	39.4%	18	18	50.0%	6	5	45.5%	8	0	-	52	36	40.9%
CHEM 2423	18	5	21.7%	0	0	-	17	0	-	0	0	-	35	5	12.5%
CIS 301	262	24	8.4%	242	22	8.3%	40	15	27.3%	22	0	-	566	61	9.7%
CIS 304	24	0	-	22	21	48.8%	0	0	-	7	0	-	53	21	28.4%
CIS 309	23	10	30.3%	26	24	48.0%	0	14	100.0%	14	0	-	63	48	43.2%
COSC 1301	217	20	8.4%	216	18	7.7%	34	25	42.4%	21	0	-	488	63	11.4%
ENGL 0307	411	0	-	296	10	3.3%	83	0	-	43	0	-	833	10	1.2%
ENGL 1301	1,697	79	4.4%	875	76	8.0%	176	0	-	84	0	-	2,832	155	5.2%
ENGL 1302	681	90	11.7%	1186	121	9.3%	182	38	17.3%	85	18	17.5%	2,134	267	11.1%
ENGL 2311	0	16	100.0%	0	19	100.0%	0	0	-	0	0	-	0	35	100.0%
GOVT 2301	387	49	11.2%	330	50	13.2%	177	61	25.6%	67	0	-	961	160	14.3%
GOVT 2302	216	0	-	272	72	20.9%	106	0	-	147	66	31.0%	741	138	15.7%
H S 301	297	0	-	262	25	8.7%	77	0	-	35	0	-	671	25	3.6%
HIST 1301	979	61	5.9%	666	64	8.8%	221	57	20.5%	81	0	-	1,947	182	8.5%
HIST 1302	320	56	14.9%	517	68	11.6%	110	59	34.9%	103	0	-	1,050	183	14.8%
MGT 301	53	0	-	37	19	33.9%	14	0	-	0	0	-	104	19	15.4%
MKT 302	11	19	63.3%	17	0	-	0	0	-	0	0	-	28	19	40.4%
N S 101	61	19	23.8%	76	0	-	0	0	-	0	0	-	137	19	12.2%
N S 310	54	0	-	42	0	-	0	30	100.0%	0	0	-	96	30	23.8%
N S 404	0	19	100.0%	10	0	-	0	0	-	0	0	-	10	19	65.5%
N S 412	56	0	-	34	14	29.2%	29	0	-	0	0	-	119	14	10.5%
N S 413	56	0	-	36	14	28.0%	26	0	-	0	0	-	118	14	10.6%
PSYC 2301	1,085	58	5.1%	758	66	8.0%	136	40	22.7%	75	51	40.5%	2,054	215	9.5%
R E 301	15	7	31.8%	6	5	45.5%	0	12	100.0%	0	0	-	21	24	53.3%
R E 303	12	0	-	0	6	100.0%	0	12	100.0%	0	0	-	12	18	60.0%
R E 307	9	0	-	0	4	100.0%	0	6	100.0%	0	0	-	9	10	52.6%
SPAN 1411	153	29	15.9%	122	0	-	58	0	-	47	0	-	380	29	7.1%
SPAN 1412	39	0	-	56	14	20.0%	34	0	-	39	0	-	168	14	7.7%
SPCH 1315	591	13	2.2%	512	0	-	232	0	-	139	0	-	1,474	13	0.9%
Total													17,702	1,945	9.9%

**Distance Learning Enrollment
Compared to Classroom Enrollment
1997-1998**

Course	Fall 1997 Enrollment			Spring 1998 Enrollment			Summer I 1998 Enrollment			Summer II 1998 Enrollment			Annual Enrollment		
	Classroom	Distance Learning	% Distance Learning	Classroom	Distance Learning	% Distance Learning	Classroom	Distance Learning	% Distance Learning	Classroom	Distance Learning	% Distance Learning	Classroom	Distance Learning	% Distance Learning
BIOL 1308	0	21	100.0%	0	11	100.0%	0	8	100.0%	0	0	-	0	40	100.0%
BUSI 1301	160	29	15.3%	138	0	-	20	0	-	24	0	-	342	29	7.8%
CHEM 2423	13	8	38.1%	0	0	-	16	0	-	0	0	-	29	8	21.6%
CHEM 2425	0	0	-	6	7	53.8%	0	0	-	13	0	-	19	7	26.9%
COSC 1301	203	21	9.4%	225	12	5.1%	59	24	28.9%	18	0	-	505	57	10.1%
ENGL 1301	1,489	58	3.7%	950	68	6.7%	180	19	9.5%	87	0	-	2,706	145	5.1%
ENGL 1302	762	50	6.2%	1,125	71	5.9%	200	0	-	100	0	-	2,187	121	5.2%
ENGR 2401	0	0	-	0	4	100.0%	0	0	-	0	0	-	0	4	100.0%
GOVT 2301	331	59	15.1%	316	63	16.6%	167	50	23.0%	58	0	-	872	172	16.5%
GOVT 2302	198	53	21.1%	257	0	-	109	0	-	118	0	-	682	53	7.2%
H S 301	300	0	-	297	0	-	100	4	3.8%	44	0	-	741	4	0.5%
HIST 1301	871	59	6.3%	641	58	8.3%	202	47	18.9%	71	0	-	1,785	164	8.4%
HIST 1302	328	49	13.0%	439	58	11.7%	214	0	-	95	0	-	1,076	107	9.0%
MGT 301	79	0	-	49	16	24.6%	13	0	-	0	0	-	141	16	10.2%
PSYC 2301	1,032	58	5.3%	740	58	7.3%	172	0	-	98	22	18.3%	2,042	138	6.3%
Total													13,127	1,065	7.5%

Telecourse Survey Responses Fall 1999, Spring & Summer 2000

	EXCELLENT	GOOD	FAIR	POOR
HOW DO YOU RATE THE TV PROGRAMS?	31.6%	46.9%	13.6%	7.9%
HOW DO YOU RATE THE TEXTBOOKS?	41.5%	48.9%	9.1%	.6%
HOW DO YOU RATE THE MAJOR TESTS OR EXAMS?	35.3%	48.0%	11.6%	5.2%
HOW DO YOU RATE THE ASSIGNMENTS?	33.3%	51.1%	11.5%	4.0%
HOW DO YOU RATE THE FACULTY/STAFF HELP?	50.6%	31.8%	11.4%	6.3%
HOW DO YOU RATE THE LIBRARY FACILITIES?	42.7%	48.0%	8.2%	1.2%
HOW DO YOU RATE THE STUDYGUIDES?	31.9%	38.7%	20.9%	8.6%
HOW DO YOU RATE THE ENGLISH LEARNING LAB?	49.4%	43.5%	5.9%	1.2%

	MUCH BENEFIT	SOME BENEFIT	NO BENEFIT
WOULD YOU HAVE FOUND LONGER ORIENTATION BENEFICIAL?	5.4%	26.5%	68.1%
WOULD YOU HAVE FOUND MORE STUDY SESSIONS BENEFICIAL?	23.4%	41.3%	35.3%
WOULD YOU HAVE FOUND TEACHER CONFERENCES BENEFICIAL?	23.2%	43.5%	33.3%
WOULD YOU HAVE FOUND REVIEW TAPES BENEFICIAL?	62.4%	17.9%	19.7%
WOULD YOU HAVE FOUND MORE INFORMATION PRIOR TO ENROLLMENT BENEFICIAL?	21.5%	29.4%	49.1%

WHY DID YOU DECIDE TO TAKE THE TELECOURSE SECTION OF THIS COURSE?	Count	Column %
I prefer the telecourse method	24	13.4
My busy schedule prevents me from taking on-campus courses	119	66.5
I thought a telecourse would be easier than the classroom section	25	14.0
It was the only section open that would fit my schedule	65	36.3
I thought the telecourse would be no different from a classroom section	14	7.8

Telecourse Survey Responses Fall 1999, Spring & Summer 2000

	HOW DO YOU RATE THE TV PROGRAMS?			
	EXCELLENT	GOOD	FAIR	POOR
BUS 1301			66.7%	33.3%
BIO 1308	22.2%	33.3%	11.1%	33.3%
BIO 1309	25.0%		25.0%	50.0%
ENG 1301	16.7%	50.0%	16.7%	16.7%
ENG 1302	33.3%	55.6%	11.1%	
GOVT 2301	35.3%	52.9%	11.8%	
GOVT 2302	22.2%	55.6%	18.5%	3.7%
HIST 1301	34.8%	39.1%	17.4%	8.7%
HIST 1302	37.0%	48.1%	7.4%	7.4%
MGT 301		75.0%		25.0%
MKT 302		100.0%		
PSYC 2301	66.7%	33.3%		
SPAN 1411	55.6%	33.3%	11.1%	

		HOW DO YOU RATE THE TEXTBOOKS?			
		EXCELLENT	GOOD	FAIR	POOR
BUS 1301		33.3%	66.7%		
BIO 1308		10.0%	70.0%	20.0%	
BIO 1309		100.0%			
ENG 1301		41.7%	33.3%	25.0%	
ENG 1302		38.9%	61.1%		
GOVT 2301		57.6%	42.4%		
GOVT 2302		37.0%	59.3%	3.7%	
HIST 1301		39.1%	52.2%	4.3%	4.3%
HIST 1302		29.6%	51.9%	18.5%	
MGT 301			50.0%	50.0%	
MKT 302		100.0%			
PSYC 2301		83.3%	16.7%		
SPAN 1411		37.5%	37.5%	25.0%	

		HOW DO YOU RATE THE MAJOR TESTS OR EXAMS?			
		EXCELLENT	GOOD	FAIR	POOR
BUS 1301		66.7%	33.3%		
BIO 1308		10.0%	50.0%	30.0%	10.0%
BIO 1309			100.0%		
ENG 1301		63.6%	18.2%	9.1%	9.1%
ENG 1302		25.0%	62.5%	12.5%	
GOVT 2301		52.9%	41.2%	2.9%	2.9%
GOVT 2302		40.7%	51.9%	3.7%	3.7%
HIST 1301		13.6%	50.0%	22.7%	13.6%
HIST 1302		30.8%	53.8%	11.5%	3.8%
MGT 301			50.0%	25.0%	25.0%
MKT 302		100.0%			
PSYC 2301		66.7%	33.3%		
SPAN 1411		22.2%	44.4%	33.3%	

Telecourse Survey Responses Fall 1999, Spring & Summer 2000

		HOW DO YOU RATE THE STUDYGUIDES?			
		EXCELLENT	GOOD	FAIR	POOR
BUS 1301		33.3%	66.7%		
BIO 1308			55.6%	22.2%	22.2%
BIO 1309			50.0%	50.0%	
ENG 1301		50.0%	8.3%	33.3%	8.3%
ENG 1302		31.3%	68.8%		
GOVT 2301		41.4%	37.9%	17.2%	3.4%
GOVT 2302		41.7%	33.3%	16.7%	8.3%
HIST 1301		22.7%	31.8%	36.4%	9.1%
HIST 1302		29.2%	33.3%	20.8%	16.7%
MGT 301			25.0%	25.0%	50.0%
MKT 302		100.0%			
PSYC 2301		50.0%	50.0%		
SPAN 1411		22.2%	44.4%	33.3%	

		HOW DO YOU RATE THE ASSIGNMENTS?			
		EXCELLENT	GOOD	FAIR	POOR
BUS 1301		33.3%	66.7%		
BIO 1308			70.0%	30.0%	
BIO 1309			100.0%		
ENG 1301		50.0%	25.0%	8.3%	16.7%
ENG 1302		22.2%	61.1%	11.1%	5.6%
GOVT 2301		40.6%	50.0%	9.4%	
GOVT 2302		44.4%	48.1%	3.7%	3.7%
HIST 1301		31.8%	50.0%	18.2%	
HIST 1302		30.8%	50.0%	11.5%	7.7%
MGT 301			50.0%	25.0%	25.0%
MKT 302		100.0%			
PSYC 2301		66.7%	33.3%		
SPAN 1411		22.2%	55.6%	22.2%	

		HOW DO YOU RATE THE FACULTY/STAFF HELP?			
		EXCELLENT	GOOD	FAIR	POOR
BUS 1301		33.3%	66.7%		
BIO 1308		30.0%	40.0%	10.0%	20.0%
BIO 1309		25.0%	75.0%		
ENG 1301		72.7%	18.2%		9.1%
ENG 1302		44.4%	38.9%	11.1%	5.6%
GOVT 2301		55.9%	29.4%	11.8%	2.9%
GOVT 2302		66.7%	25.9%	7.4%	
HIST 1301		27.3%	40.9%	27.3%	4.5%
HIST 1302		37.0%	33.3%	14.8%	14.8%
MGT 301		25.0%	25.0%	25.0%	25.0%
MKT 302		100.0%			
PSYC 2301		66.7%	33.3%		
SPAN 1411		100.0%			

Telecourse Survey Responses Fall 1999, Spring & Summer 2000

		HOW DO YOU RATE THE LIBRARY FACILITIES?			
		EXCELLENT	GOOD	FAIR	POOR
BUS 1301			66.7%	33.3%	
BIO 1308		44.4%	55.6%		
BIO 1309		25.0%	75.0%		
ENG 1301		50.0%	33.3%	16.7%	
ENG 1302		41.2%	52.9%	5.9%	
GOVT 2301		45.5%	51.5%	3.0%	
GOVT 2302		40.7%	48.1%	3.7%	7.4%
HIST 1301		40.9%	45.5%	13.6%	
HIST 1302		53.8%	42.3%	3.8%	
MGT 301		25.0%	50.0%	25.0%	
MKT 302			100.0%		
PSYC 2301		50.0%	33.3%	16.7%	
SPAN 1411		28.6%	42.9%	28.6%	

		HOW DO YOU RATE THE ENGLISH LEARNING LAB?			
		EXCELLENT	GOOD	FAIR	POOR
BUS 1301		50.0%	50.0%		
BIO 1308		44.4%	44.4%		11.1%
BIO 1309		25.0%	75.0%		
ENG 1301		63.6%	18.2%	18.2%	
ENG 1302		47.1%	52.9%		
GOVT 2301		47.1%	44.1%	8.8%	
GOVT 2302		51.9%	44.4%		3.7%
HIST 1301		50.0%	45.5%	4.5%	
HIST 1302		55.6%	37.0%	7.4%	
MGT 301		25.0%	25.0%	50.0%	
MKT 302			100.0%		
PSYC 2301		66.7%	33.3%		
SPAN 1411		33.3%	66.7%		

Telecourse Survey Responses Fall 1999, Spring & Summer 2000

	WOULD YOU HAVE FOUND LONGER ORIENTATION BENEFICIAL?		
	MUCH BENEFIT	SOME BENEFIT	NO BENEFIT
BUS 1301		33.3%	66.7%
BIO 1308	20.0%	40.0%	40.0%
BIO 1309		75.0%	25.0%
ENG 1301		50.0%	50.0%
ENG 1302		20.0%	80.0%
GOVT 2301		25.0%	75.0%
GOVT 2302	8.0%	20.0%	72.0%
HIST 1301	18.2%	18.2%	63.6%
HIST 1302	4.0%	20.0%	76.0%
MGT 301		33.3%	66.7%
MKT 302			100.0%
PSYC 2301		50.0%	50.0%
SPAN 1411		12.5%	87.5%

	WOULD YOU HAVE FOUND MORE STUDY SESSIONS BENEFICIAL?		
	MUCH BENEFIT	SOME BENEFIT	NO BENEFIT
BUS 1301			100.0%
BIO 1308	22.2%	66.7%	11.1%
BIO 1309		75.0%	25.0%
ENG 1301	25.0%	66.7%	8.3%
ENG 1302	25.0%	50.0%	25.0%
GOVT 2301	21.9%	34.4%	43.8%
GOVT 2302	25.0%	45.8%	29.2%
HIST 1301	30.4%	21.7%	47.8%
HIST 1302	12.0%	36.0%	52.0%
MGT 301	75.0%	25.0%	
MKT 302		100.0%	
PSYC 2301	33.3%	33.3%	33.3%
SPAN 1411	25.0%	50.0%	25.0%

	WOULD YOU HAVE FOUND TEACHER CONFERENCES BENEFICAL?		
	MUCH BENEFIT	SOME BENEFIT	NO BENEFIT
BUS 1301		66.7%	33.3%
BIO 1308	40.0%	30.0%	30.0%
BIO 1309	25.0%	75.0%	
ENG 1301	41.7%	58.3%	
ENG 1302	18.8%	56.3%	25.0%
GOVT 2301	12.5%	43.8%	43.8%
GOVT 2302	13.0%	52.2%	34.8%
HIST 1301	21.7%	30.4%	47.8%
HIST 1302	19.2%	34.6%	46.2%
MGT 301	66.7%	33.3%	
MKT 302		100.0%	
PSYC 2301	16.7%	50.0%	33.3%
SPAN 1411	66.7%	22.2%	11.1%

	WOULD YOU HAVE FOUND REVIEW TAPES BENEFICAL?		
	MUCH BENEFIT	SOME BENEFIT	NO BENEFIT
BUS 1301		33.3%	66.7%
BIO 1308	50.0%	20.0%	30.0%
BIO 1309	50.0%	25.0%	25.0%
ENG 1301	66.7%	16.7%	16.7%
ENG 1302	41.2%	29.4%	29.4%
GOVT 2301	73.5%	11.8%	14.7%
GOVT 2302	76.0%	12.0%	12.0%
HIST 1301	59.1%	13.6%	27.3%
HIST 1302	57.7%	30.8%	11.5%
MGT 301	75.0%		25.0%
MKT 302			100.0%
PSYC 2301	100.0%		
SPAN 1411	55.6%	22.2%	22.2%

	WOULD YOU HAVE FOUND MORE INFORMATION PRIOR TO ENROLLMENT BENEFICAL?		
	MUCH BENEFIT	SOME BENEFIT	NO BENEFIT
BUS 1301		33.3%	66.7%
BIO 1308	60.0%	10.0%	30.0%
BIO 1309		50.0%	50.0%
ENG 1301	50.0%	41.7%	8.3%
ENG 1302	20.0%	26.7%	53.3%
GOVT 2301	6.5%	38.7%	54.8%
GOVT 2302	16.7%	25.0%	58.3%
HIST 1301	17.4%	26.1%	56.5%
HIST 1302	29.2%	20.8%	50.0%
MGT 301		66.7%	33.3%
MKT 302			100.0%
PSYC 2301	33.3%	33.3%	33.3%
SPAN 1411	14.3%	28.6%	57.1%

Internet Survey Responses Fall 1999, Spring & Summer 2000

	EXCELLENT	GOOD	FAIR	POOR
HOW DO YOU RATE THE WEBCT SERVER?	48.0%	37.3%	11.9%	2.8%
HOW DO YOU RATE THE TEXTBOOKS?	39.8%	38.6%	17.0%	4.7%
HOW DO YOU RATE THE CHATROOMS?	16.7%	44.9%	24.4%	14.1%
HOW DO YOU RATE THE WEBCT EXAMS?	37.9%	45.0%	11.8%	5.3%
HOW DO YOU RATE THE FACULTY/STAFF HELP?	49.7%	26.9%	12.6%	10.9%
HOW DO YOU RATE THE WEB PAGES?	44.0%	42.9%	10.9%	2.3%
HOW DO YOU RATE THE E-MAIL?	48.5%	38.6%	9.9%	2.9%
HOW DO YOU RATE THE SUPPORT CD/ROM?	27.1%	36.4%	28.6%	7.9%

	MUCH BENEFIT	SOME BENEFIT	NO BENEFIT
WOULD YOU HAVE FOUND LONGER ORIENTATION BENEFICAL?	10.4%	24.3%	65.3%
WOULD YOU HAVE FOUND MID-SEMESTER ON-SITE WORKSHOPS BENEFICAL?	22.0%	32.9%	45.1%
WOULD YOU HAVE FOUND TEACHER CONFERENCES BENEFICAL?	25.4%	38.2%	36.4%
WOULD YOU HAVE FOUND ON-CAMPUS TESTING CENTER BENEFICAL?	13.9%	24.9%	61.3%
WOULD YOU HAVE FOUND MORE INFORMATION PRIOR TO ENROLLMENT BENEFICAL?	22.3%	32.6%	45.1%

WHY DID YOU DECIDE TO TAKE THE INTERNET SECTION OF THIS COURSE? (MARK ALL THAT APPLY)		
	Count	%
I prefer the internet course method	137	75.7%
My busy schedule prevents me from taking on-campus courses	49	27.1%
I thought the internet would be easier than the classroom section	81	44.8%
It was the only section open that would fit my schedule	20	11.0%
I thought the internet course would be no different from a classroom section	58	32.0%

Internet Survey Responses Fall 1999, Spring & Summer 2000

	HOW DO YOU RATE THE WEBCT SERVER?			
	EXCELLENT	GOOD	FAIR	POOR
BT 303M	75.0%	25.0%		
CR 717		100.0%		
ITSC 1301	33.3%	50.0%	8.3%	8.3%
ITNW 1325	44.4%	55.6%		
IMED 1305	40.0%	40.0%	20.0%	
ITNW 1337	33.3%	50.0%	16.7%	
ITSW 1311	57.1%	42.9%		
ITSE 2449	33.3%	33.3%	33.3%	
COSC 1301	43.8%	50.0%	6.3%	
ENGL 0307	66.7%	33.3%		
ENGL 2311	54.5%	36.4%	9.1%	
ENGL 2327	33.3%	66.7%		
ENGL 2328	100.0%			
ENG 1301	50.0%	41.7%	8.3%	
ENG 1302	52.9%	17.6%	29.4%	
GOVT 2302		100.0%		
MUSI 1306		42.9%	42.9%	14.3%
MUSI 1306	45.8%	25.0%	16.7%	12.5%
PSYC 2301	45.5%	36.4%	18.2%	
PSYC 2314	55.6%	44.4%		
RELE 1301	83.3%	16.7%		
RELE 1311	60.0%	40.0%		

Internet Survey Responses Fall 1999, Spring & Summer 2000

	HOW DO YOU RATE THE TEXTBOOKS?			
	EXCELLENT	GOOD	FAIR	POOR
BT 303M	50.0%	25.0%	25.0%	
CR 717	100.0%			
ITSC 1301	41.7%	25.0%	33.3%	
ITNW 1325	20.0%	60.0%	20.0%	
IMED 1305			80.0%	20.0%
ITNW 1337	66.7%	16.7%	16.7%	
ITSW 1311	33.3%	66.7%		
ITSE 2449	66.7%	33.3%		
COSC 1301	50.0%	37.5%	6.3%	6.3%
ENGL 0307	33.3%	33.3%	33.3%	
ENGL 2311	45.5%	27.3%	27.3%	
ENGL 2327		66.7%	33.3%	
ENGL 2328	75.0%	25.0%		
ENG 1301	16.7%	33.3%	41.7%	8.3%
ENG 1302	28.6%	64.3%		7.1%
GOVT 2302		100.0%		
MUSI 1306		71.4%	14.3%	14.3%
MUSI 1306	39.1%	43.5%	8.7%	8.7%
PSYC 2301	63.6%	27.3%	9.1%	
PSYC 2314	50.0%	25.0%	12.5%	12.5%
RELE 1301	83.3%	16.7%		
RELE 1311	40.0%	40.0%	20.0%	

Internet Survey Responses Fall 1999, Spring & Summer 2000

	HOW DO YOU RATE THE CHATROOMS?			
	EXCELLENT	GOOD	FAIR	POOR
BT 303M	25.0%	25.0%		50.0%
CR 717		100.0%		
ITSC 1301	20.0%	40.0%	40.0%	
ITNW 1325	14.3%	42.9%	42.9%	
IMED 1305		40.0%	40.0%	20.0%
ITNW 1337	16.7%	33.3%	50.0%	
ITSW 1311	16.7%	66.7%	16.7%	
ITSE 2449	33.3%		66.7%	
COSC 1301	35.7%	21.4%	28.6%	14.3%
ENGL 0307	50.0%			50.0%
ENGL 2311	10.0%	50.0%	30.0%	10.0%
ENGL 2327		66.7%		33.3%
ENGL 2328	40.0%	20.0%	20.0%	20.0%
ENG 1301	9.1%	36.4%	27.3%	27.3%
ENG 1302	8.3%	50.0%	8.3%	33.3%
GOVT 2302	100.0%			
MUSI 1306		57.1%	28.6%	14.3%
MUSI 1306	10.0%	65.0%	15.0%	10.0%
PSYC 2301	22.2%	33.3%	11.1%	33.3%
PSYC 2314	11.1%	55.6%	33.3%	
RELE 1301	33.3%	50.0%	16.7%	
RELE 1311		80.0%	20.0%	

Internet Survey Responses Fall 1999, Spring & Summer 2000

	HOW DO YOU RATE THE E-MAIL?			
	EXCELLENT	GOOD	FAIR	POOR
BT 303M	75.0%	25.0%		
CR 717	50.0%	50.0%		
ITSC 1301	58.3%	41.7%		
ITNW 1325	60.0%	40.0%		
IMED 1305	40.0%	40.0%	20.0%	
ITNW 1337	66.7%	16.7%	16.7%	
ITSW 1311	83.3%	16.7%		
ITSE 2449	33.3%	66.7%		
COSC 1301	66.7%	20.0%	13.3%	
ENGL 0307	50.0%	50.0%		
ENGL 2311	63.6%	27.3%	9.1%	
ENGL 2327	33.3%	33.3%	33.3%	
ENGL 2328	40.0%	40.0%		20.0%
ENG 1301	25.0%	41.7%	16.7%	16.7%
ENG 1302	37.5%	37.5%	18.8%	6.3%
GOVT 2302		100.0%		
MUSI 1306		71.4%	28.6%	
MUSI 1306	31.8%	59.1%	9.1%	
PSYC 2301	30.0%	40.0%	20.0%	10.0%
PSYC 2314	66.7%	33.3%		
RELE 1301	80.0%	20.0%		
RELE 1311	80.0%	20.0%		

Internet Survey Responses Fall 1999, Spring & Summer 2000

	HOW DO YOU RATE THE WEBCT EXAMS?			
	EXCELLENT	GOOD	FAIR	POOR
BT 303M	33.3%	66.7%		
CR 717		100.0%		
ITSC 1301	33.3%	41.7%	16.7%	8.3%
ITNW 1325	66.7%	33.3%		
IMED 1305	20.0%	40.0%	40.0%	
ITNW 1337	80.0%		20.0%	
ITSW 1311	33.3%	66.7%		
ITSE 2449		33.3%		66.7%
COSC 1301	43.8%	50.0%	6.3%	
ENGL 0307	33.3%	66.7%		
ENGL 2311	22.2%	66.7%	11.1%	
ENGL 2327		100.0%		
ENGL 2328	60.0%	20.0%		20.0%
ENG 1301	33.3%	50.0%	8.3%	8.3%
ENG 1302	26.7%	60.0%	13.3%	
GOVT 2302		100.0%		
MUSI 1306		42.9%	57.1%	
MUSI 1306	30.4%	47.8%	4.3%	17.4%
PSYC 2301	27.3%	45.5%	27.3%	
PSYC 2314	66.7%	22.2%	11.1%	
RELE 1301	66.7%	16.7%	16.7%	
RELE 1311	100.0%			

Internet Survey Responses Fall 1999, Spring & Summer 2000

	HOW DO YOU RATE THE FACULTY/STAFF HELP?			
	EXCELLENT	GOOD	FAIR	POOR
BT 303M	100.0%			
CR 717	100.0%			
ITSC 1301	50.0%	50.0%		
ITNW 1325	50.0%	40.0%	10.0%	
IMED 1305	40.0%	20.0%		40.0%
ITNW 1337	66.7%	33.3%		
ITSW 1311	42.9%	57.1%		
ITSE 2449	33.3%			66.7%
COSC 1301	62.5%	18.8%	6.3%	12.5%
ENGL 0307	66.7%		33.3%	
ENGL 2311	63.6%	27.3%	9.1%	
ENGL 2327	33.3%	66.7%		
ENGL 2328	60.0%	20.0%		20.0%
ENG 1301	8.3%	16.7%	33.3%	41.7%
ENG 1302	50.0%	18.8%	25.0%	6.3%
GOVT 2302		100.0%		
MUSI 1306			42.9%	57.1%
MUSI 1306	36.4%	36.4%	18.2%	9.1%
PSYC 2301	30.0%	50.0%	20.0%	
PSYC 2314	77.8%	11.1%	11.1%	
RELE 1301	100.0%			
RELE 1311	80.0%	20.0%		

Internet Survey Responses Fall 1999, Spring & Summer 2000

	HOW DO YOU RATE THE WEB PAGES?			
	EXCELLENT	GOOD	FAIR	POOR
BT 303M	50.0%	50.0%		
CR 717		100.0%		
ITSC 1301	58.3%	33.3%	8.3%	
ITNW 1325	60.0%	40.0%		
IMED 1305	20.0%	40.0%		40.0%
ITNW 1337	33.3%	50.0%	16.7%	
ITSW 1311	42.9%	57.1%		
ITSE 2449	33.3%	33.3%	33.3%	
COSC 1301	46.7%	40.0%	13.3%	
ENGL 0307	66.7%		33.3%	
ENGL 2311	54.5%	45.5%		
ENGL 2327	33.3%	66.7%		
ENGL 2328	40.0%	40.0%		20.0%
ENG 1301	25.0%	66.7%	8.3%	
ENG 1302	41.2%	52.9%	5.9%	
GOVT 2302			100.0%	
MUSI 1306		42.9%	57.1%	
MUSI 1306	43.5%	39.1%	17.4%	
PSYC 2301	30.0%	50.0%	10.0%	10.0%
PSYC 2314	55.6%	33.3%	11.1%	
RELE 1301	83.3%	16.7%		
RELE 1311	80.0%	20.0%		

Internet Survey Responses Fall 1999, Spring & Summer 2000

	HOW DO YOU RATE THE SUPPORT CD/ROM?			
	EXCELLENT	GOOD	FAIR	POOR
BT 303M	33.3%	66.7%		
CR 717	50.0%	50.0%		
ITSC 1301	27.3%	36.4%	27.3%	9.1%
ITNW 1325	44.4%	22.2%	33.3%	
IMED 1305		60.0%		40.0%
ITNW 1337	20.0%	40.0%	40.0%	
ITSW 1311	20.0%	40.0%	40.0%	
ITSE 2449	33.3%		66.7%	
COSC 1301	50.0%	33.3%	16.7%	
ENGL 0307	50.0%		50.0%	
ENGL 2311	16.7%	83.3%		
ENGL 2327			100.0%	
ENGL 2328	40.0%	40.0%		20.0%
ENG 1301	11.1%	22.2%	44.4%	22.2%
ENG 1302	33.3%	25.0%	41.7%	
GOVT 2302	100.0%			
MUSI 1306		28.6%	57.1%	14.3%
MUSI 1306	15.0%	45.0%	30.0%	10.0%
PSYC 2301	25.0%	37.5%	25.0%	12.5%
PSYC 2314	25.0%	50.0%	12.5%	12.5%
RELE 1301	66.7%	33.3%		
RELE 1311	50.0%		50.0%	

Internet Survey Responses Fall 1999, Spring & Summer 2000

	WOULD YOU HAVE FOUND LONGER ORIENTATION BENEFICIAL?		
	MUCH BENEFIT	SOME BENEFIT	NO BENEFIT
BT 303M		66.7%	33.3%
CR 717			100.0%
ITSC 1301	23.1%	30.8%	46.2%
ITNW 1325		20.0%	80.0%
IMED 1305	20.0%	20.0%	60.0%
ITNW 1337	50.0%	16.7%	33.3%
ITSW 1311		28.6%	71.4%
ITSE 2449	33.3%		66.7%
COSC 1301	12.5%	18.8%	68.8%
ENGL 0307		100.0%	
ENGL 2311		18.2%	81.8%
ENGL 2327		50.0%	50.0%
ENGL 2328		20.0%	80.0%
ENG 1301		33.3%	66.7%
ENG 1302	18.8%	18.8%	62.5%
MUSI 1306	14.3%	28.6%	57.1%
MUSI 1306	13.0%	8.7%	78.3%
PSYC 2301	10.0%	50.0%	40.0%
PSYC 2314		11.1%	88.9%
RELE 1301		16.7%	83.3%
RELE 1311		50.0%	50.0%

Internet Survey Responses Fall 1999, Spring & Summer 2000

	WOULD YOU HAVE FOUND MID-SEMESTER ON-SITE WORKSHOPS BENEFICAL?		
	MUCH BENEFIT	SOME BENEFIT	NO BENEFIT
BT 303M	33.3%	66.7%	
CR 717			100.0%
ITSC 1301	23.1%	30.8%	46.2%
ITNW 1325	10.0%	60.0%	30.0%
IMED 1305	20.0%	60.0%	20.0%
ITNW 1337	16.7%	83.3%	
ITSW 1311	14.3%	57.1%	28.6%
ITSE 2449	66.7%	33.3%	
COSC 1301	12.5%	50.0%	37.5%
ENGL 0307	33.3%	66.7%	
ENGL 2311	36.4%	18.2%	45.5%
ENGL 2327	50.0%	50.0%	
ENGL 2328		40.0%	60.0%
ENG 1301	33.3%	8.3%	58.3%
ENG 1302	18.8%	12.5%	68.8%
MUSI 1306	28.6%	28.6%	42.9%
MUSI 1306	21.7%	17.4%	60.9%
PSYC 2301	40.0%	40.0%	20.0%
PSYC 2314	11.1%	22.2%	66.7%
RELE 1301		16.7%	83.3%
RELE 1311	25.0%	25.0%	50.0%

Internet Survey Responses Fall 1999, Spring & Summer 2000

	WOULD YOU HAVE FOUND TEACHER CONFERENCES BENEFICIAL?		
	MUCH BENEFIT	SOME BENEFIT	NO BENEFIT
BT 303M	33.3%	33.3%	33.3%
CR 717		50.0%	50.0%
ITSC 1301	23.1%	46.2%	30.8%
ITNW 1325	10.0%	70.0%	20.0%
IMED 1305	20.0%	60.0%	20.0%
ITNW 1337	33.3%	50.0%	16.7%
ITSW 1311	28.6%	42.9%	28.6%
ITSE 2449	100.0%		
COSC 1301	18.8%	31.3%	50.0%
ENGL 0307	33.3%	66.7%	
ENGL 2311	9.1%	36.4%	54.5%
ENGL 2327	50.0%	50.0%	
ENGL 2328	20.0%	40.0%	40.0%
ENG 1301	33.3%	41.7%	25.0%
ENG 1302	35.3%	41.2%	23.5%
MUSI 1306	42.9%	28.6%	28.6%
MUSI 1306	22.7%	27.3%	50.0%
PSYC 2301	40.0%	30.0%	30.0%
PSYC 2314	11.1%	22.2%	66.7%
RELE 1301	16.7%	16.7%	66.7%
RELE 1311		50.0%	50.0%

Internet Survey Responses Fall 1999, Spring & Summer 2000

	WOULD YOU HAVE FOUND ON-CAMPUS TESTING CENTER BENEFICIAL?		
	MUCH BENEFIT	SOME BENEFIT	NO BENEFIT
BT 303M		66.7%	33.3%
CR 717			100.0%
ITSC 1301	7.7%	23.1%	69.2%
ITNW 1325	10.0%	20.0%	70.0%
IMED 1305		20.0%	80.0%
ITNW 1337	33.3%	50.0%	16.7%
ITSW 1311	14.3%	14.3%	71.4%
ITSE 2449	100.0%		
COSC 1301	25.0%	31.3%	43.8%
ENGL 0307	33.3%	66.7%	
ENGL 2311	9.1%	9.1%	81.8%
ENGL 2327		50.0%	50.0%
ENGL 2328			100.0%
ENG 1301		27.3%	72.7%
ENG 1302	5.9%	23.5%	70.6%
MUSI 1306	42.9%	42.9%	14.3%
MUSI 1306	17.4%	34.8%	47.8%
PSYC 2301	20.0%	10.0%	70.0%
PSYC 2314		22.2%	77.8%
RELE 1301		16.7%	83.3%
RELE 1311			100.0%

Internet Survey Responses Fall 1999, Spring & Summer 2000

	WOULD YOU HAVE FOUND MORE INFORMATION PRIOR TO ENROLLMENT BENEFICAL?		
	MUCH BENEFIT	SOME BENEFIT	NO BENEFIT
BT 303M	33.3%	33.3%	33.3%
CR 717	33.3%	33.3%	33.3%
ITSC 1301	38.5%	23.1%	38.5%
ITNW 1325	30.0%	30.0%	40.0%
IMED 1305	20.0%		80.0%
ITNW 1337	16.7%	83.3%	
ITSW 1311		42.9%	57.1%
ITSE 2449	66.7%	33.3%	
COSC 1301	18.8%	37.5%	43.8%
ENGL 0307	33.3%	66.7%	
ENGL 2311	9.1%	9.1%	81.8%
ENGL 2327	50.0%		50.0%
ENGL 2328		20.0%	80.0%
ENG 1301	9.1%	63.6%	27.3%
ENG 1302	35.3%	17.6%	47.1%
MUSI 1306	28.6%	42.9%	28.6%
MUSI 1306	16.7%	41.7%	41.7%
PSYC 2301	40.0%	20.0%	40.0%
PSYC 2314	11.1%	22.2%	66.7%
RELE 1301	16.7%	16.7%	66.7%
RELE 1311		50.0%	50.0%

Interactive Video Survey Responses Fall 1999, Spring & Summer 2000

	EXCELLENT	GOOD	FAIR	POOR
HOW DO YOU RATE THE TEXTBOOKS?	15.2%	57.6%	9.1%	18.2%
HOW DO YOU RATE THE STUDY GUIDES?	6.9%	27.6%	44.8%	20.7%
HOW DO YOU RATE THE ASSIGNMENTS?	6.9%	37.9%	41.4%	13.8%
HOW DO YOU RATE THE FACULTY/STAFF HELP?	6.1%	30.3%	33.3%	30.3%
HOW DO YOU RATE THE LIBRARY FACILITIES?	25.8%	41.9%	16.1%	16.1%
HOW DO YOU RATE THE ENGLISH LEARNING CENTER?	16.0%	48.0%	24.0%	12.0%
HOW DO YOU RATE THE MAJOR TESTS OR EXAMS?	3.1%	31.3%	40.6%	25.0%
HOW DO YOU RATE THE NURSE LEARNING LAB?		46.9%	31.3%	21.9%

	MUCH BENEFIT	SOME BENEFIT	NO BENEFIT
WOULD YOU HAVE FOUND LONGER ORIENTATION BENEFICIAL?	17.9%	28.6%	53.6%
WOULD YOU HAVE FOUND MORE STUDY SESSIONS BENEFICIAL?	17.9%	46.4%	35.7%
WOULD YOU HAVE FOUND TEACHER CONFERENCES BENEFICIAL?	37.9%	44.8%	17.2%
WOULD YOU HAVE FOUND REVIEW TAPES BENEFICIAL?	27.6%	48.3%	24.1%
WOULD YOU HAVE FOUND MORE INFORMATION PRIOR TO ENROLLMENT BENEFICIAL?	28.6%	42.9%	28.6%

WHY DID YOU DECIDE TO TAKE THE INTERACTIVE VIDEO SECTION OF THIS COURSE? (MARK ALL THAT APPLY)		
	Count	%
I prefer the interactive video course method	0	
My busy schedule prevents me from taking on-campus courses	0	
I thought the interactive video would be easier than the classroom section	0	
It was the only section open that would fit my schedule	18	54.5%
I thought the interactive video course would be no different from a classroom section	3	9.1%
I reside outside of Corpus Christi and the video section is convenient	3	9.1%

Interactive Video Survey Responses Fall 1999, Spring & Summer 2000

	HOW DO YOU RATE THE TEXTBOOKS?			
	EXCELLENT	GOOD	FAIR	POOR
Chem 2323		100.0%		
NS 310	25.0%	75.0%		
NS 404	50.0%	50.0%		
NS 410		63.6%	18.2%	18.2%
NS 411	9.1%	63.6%	9.1%	18.2%

	HOW DO YOU RATE THE STUDY GUIDES?			
	EXCELLENT	GOOD	FAIR	POOR
Chem 2323			100.0%	
NS 310		75.0%		25.0%
NS 404	50.0%	50.0%		
NS 410			77.8%	22.2%
NS 411	11.1%	22.2%	55.6%	11.1%

	HOW DO YOU RATE THE ASSIGNMENTS?			
	EXCELLENT	GOOD	FAIR	POOR
Chem 2323	100.0%			
NS 310		25.0%	75.0%	
NS 404		100.0%		
NS 410		33.3%	55.6%	11.1%
NS 411	10.0%	40.0%	40.0%	10.0%

	HOW DO YOU RATE THE MAJOR TESTS OR EXAMS?			
	EXCELLENT	GOOD	FAIR	POOR
Chem 2323	100.0%			
NS 310		33.3%	66.7%	
NS 404		100.0%		
NS 410		9.1%	63.6%	27.3%
NS 411		36.4%	36.4%	27.3%

	HOW DO YOU RATE THE NURSE LEARNING LAB?		
	GOOD	FAIR	POOR
NS 310	50.0%	50.0%	
NS 404	50.0%	50.0%	
NS 410	45.5%	36.4%	18.2%
NS 411	45.5%	27.3%	27.3%

Interactive Video Survey Responses Fall 1999, Spring & Summer 2000

	HOW DO YOU RATE THE FACULTY/STAFF HELP?			
	EXCELLENT	GOOD	FAIR	POOR
Chem 2323		100.0%		
NS 310	25.0%	25.0%	50.0%	
NS 404		50.0%	50.0%	
NS 410		27.3%	27.3%	45.5%
NS 411	9.1%	36.4%	27.3%	27.3%

	HOW DO YOU RATE THE LIBRARY FACILITIES?			
	EXCELLENT	GOOD	FAIR	POOR
Chem 2323				100.0%
NS 310	50.0%	25.0%	25.0%	
NS 404	50.0%			50.0%
NS 410	20.0%	50.0%	20.0%	10.0%
NS 411	30.0%	50.0%	20.0%	

	HOW DO YOU RATE THE ENGLISH LEARNING CENTER?			
	EXCELLENT	GOOD	FAIR	POOR
NS 310	25.0%	50.0%	25.0%	
NS 404	50.0%	50.0%		
NS 410	14.3%	42.9%	28.6%	14.3%
NS 411	12.5%	50.0%	37.5%	

	WOULD YOU HAVE FOUND LONGER ORIENTATION BENEFICIAL?		
	MUCH BENEFIT	SOME BENEFIT	NO BENEFIT
NS 310	50.0%		50.0%
NS 404	50.0%		50.0%
NS 410		44.4%	55.6%
NS 411		40.0%	60.0%

	WOULD YOU HAVE FOUND MORE STUDY SESSIONS BENEFICIAL?		
	MUCH BENEFIT	SOME BENEFIT	NO BENEFIT
NS 310	50.0%	25.0%	25.0%
NS 404	50.0%	50.0%	
NS 410	11.1%	44.4%	44.4%
NS 411	10.0%	50.0%	40.0%

Interactive Video Survey Responses Fall 1999, Spring & Summer 2000

	WOULD YOU HAVE FOUND TEACHER CONFERENCES BENEFICAL?		
	MUCH BENEFIT	SOME BENEFIT	NO BENEFIT
NS 310	50.0%	25.0%	25.0%
NS 404	50.0%	50.0%	
NS 410	22.2%	55.6%	22.2%
NS 411	20.0%	60.0%	20.0%

	WOULD YOU HAVE FOUND REVIEW TAPES BENEFICAL?		
	MUCH BENEFIT	SOME BENEFIT	NO BENEFIT
NS 310	50.0%	25.0%	25.0%
NS 404	50.0%	50.0%	
NS 410	22.2%	44.4%	33.3%
NS 411	10.0%	60.0%	30.0%

	WOULD YOU HAVE FOUND MORE INFORMATION PRIOR TO ENROLLMENT BENEFICAL?		
	MUCH BENEFIT	SOME BENEFIT	NO BENEFIT
NS 310	25.0%	25.0%	50.0%
NS 404		100.0%	
NS 410	22.2%	55.6%	22.2%
NS 411	40.0%	30.0%	30.0%