

# Rapid Track

## Enrollment, Grades, and Student Survey

Rapid Track courses were first introduced as a Del Mar College flexible scheduling option during the fall semester of 1998.

Rapid Track offers an opportunity for highly-motivated students who can devote time to an accelerated program of study. The difference between a Rapid Track course and a "regular" semester-long course is in the length (six weeks instead of 16) and intensity (four days per week, Monday through Thursday, rather than every other day). The Rapid Track Associate Degree option is designed so students can complete an Associate in Arts degree in one year.

### Enrollment

The number of Rapid Track courses offered at Del Mar College has increased from 7 courses taught in the term I of Fall 1998 to 15 courses taught in Spring 2001. During its first year, Rapid Track enrollment was 117 in the fall and 209 the following spring; then enrollments increased and has remained steady with 148 in Fall 1999 compared to 146 in Fall 2000 and 251 in Spring 2000 compared to 306 in Spring 2001. Rapid Track enrollments accounted for 5 percent of all like course enrollments during 1999-2000.

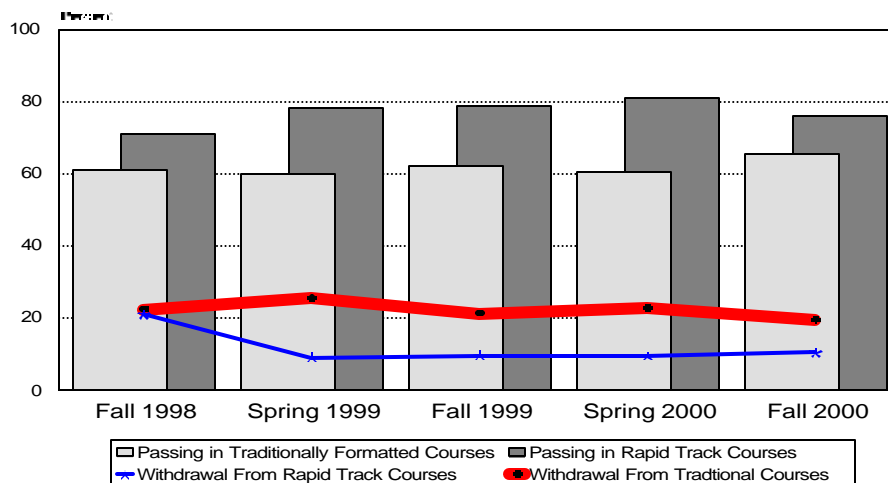
A total of thirty different courses have been offered through Rapid Track. From Fall 1998 to Spring 2001, the average class size for Rapid Track courses has ranged from 12.3 to 16.7, significantly smaller than the same courses taught in the traditional format which ranged from 22.7 to 28.0 during the same time frame.

A comparison of the basic demographics of students who elect to enroll in Rapid Track verses students college-wide shows a slightly higher proportion of white, non-Hispanic students and a corresponding lower proportion of Hispanic students enrolled in Rapid Track. Proportionately more Rapid Track students are female and a consistently larger proportion of Rapid Track students are in the 20-24 age group when compared to students college-wide. Proportionately less students are in the age group of less than 20 when compared to students college-wide.

### Grades

Grade distribution comparisons for Rapid Track courses and traditionally formatted courses with a Rapid Track section show Rapid Track students pass (A-D) their courses at a rate of 10 to 20 percent higher than students

Passing and Withdrawal Rates For Rapid Track Courses Compared to the Same Semester-Long Courses



in the same courses taught in the traditional format. As the graph above indicates, Rapid Track courses not only have a higher passing rate but also have a lower withdrawal rate compared to traditionally formatted courses. During the past two years, the withdrawal rate for Rapid Track courses has remained steady at 9 to 10 percent, significantly less than the withdrawal rate of the same courses taught in the traditional 16 week duration (20 to 25 percent).

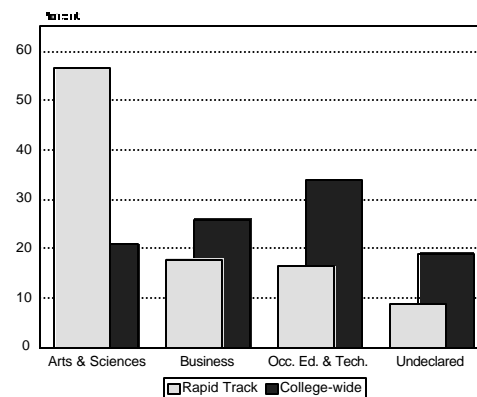
### Student Survey

A survey was administered to Rapid Track students during the Fall II 2000 term and the Spring III 2001 term, and a total of 164 surveys (a 58 percent response rate) were completed and analyzed. Thirty-nine percent of survey respondents indicated that they had taken other Rapid Track courses prior to the current semester and the majority (73 percent) were concurrently enrolled in a non-Rapid Track course that semester. When students were asked if they believe there is enough time to adequately cover the materials in a Rapid Track course, the overwhelming majority (94 percent) responded yes. As a measure of overall satisfaction, students were asked if they would recommend Rapid Track to other students. Again, the overwhelming majority (98 percent) responded yes. As another measure of satisfaction, three out of four respondents indicated they intend to take Rapid Track courses in the future.

### Majors

Although all courses offered under Rapid Track during the fall of 2000 were within the Arts & Sciences Division, only 57 percent of the survey respondents had declared an Arts & Sciences major (21 percent of students declared an Arts & Science major college-wide). Smaller proportions of survey respondents (18 percent) declared a Business major or an Occupational Education major (16 percent) as do students college-wide (26 percent and 34 percent respectively). A smaller proportion (9 percent) of survey respondents were undeclared compared to students college-wide (19 percent).

Students by Declared Major Fall 2000



Detailed tables comparing grade distributions for each Rapid Track course and details from the Rapid Track survey are available in the Office of Institutional Research & Effectiveness or at the website <http://www.delmar.edu/IRE/reports.html>

## Rapid Track Enrollment as a Proportion of the Total Course Enrollment

	Fall 2000			Spring 2001		
	Traditional Format Enrollment During Semesters Rapid Track Course Offered	Rapid Track Enrollment	% Rapid Track	Traditional Format Enrollment During Semesters Rapid Track Course Offered	Rapid Track Enrollment	% Rapid Track
DRAM 1320				25	10	28.6%
ENGL 1301	616	18	2.8%	762	14	1.8%
ENGL 1302	555	10	1.8%	772	35	4.3%
ENGL 2322	123	13	9.6%	0	13	100.0%
ENGL 2323				104	12	10.3%
ESOL 0354	39	6	13.3%			
GOVT 2301	441	22	4.8%	328	20	5.7%
GOVT 2302				307	26	7.8%
HIST 1301	793	43	5.1%	525	42	7.4%
HIST 1302				441	45	9.3%
MATH 1314				743	6	0.8%
MUSI 1306				45	21	31.8%
POFI 1301				178	9	4.8%
PSYC 2301	856	16	1.8%	702	7	1.0%
SPAN 1411				82	9	9.9%
SPCH 1315	466	18	3.7%	476	37	7.2%
<b>Total</b>	<b>3,889</b>	<b>146</b>	<b>3.6%</b>	<b>5,490</b>	<b>306</b>	<b>5.3%</b>
<b>Average Class Size</b>	<b>25.3</b>	<b>16.2</b>		<b>22.7</b>	<b>15.3</b>	

Courses are listed in the semester they were reported to the Coordinating Board.

(The second term in the fall is reported in the spring, and the second term in the spring is reported in the summer.)

## Average Class Size Rapid Track

	Fall 2000			Spring 2001		
	Number of Sections	Enrollment	Average Class Size	Number of Sections	Enrollment	Average Class Size
DRAM 1320				1	10	10.0
ENGL 1301	1	18	18.0	1	14	14.0
ENGL 1302	1	10	10.0	2	35	17.5
ENGL 2322	1	13	13.0	1	13	13.0
ENGL 2323				1	12	12.0
ESOL 0354	1	6	6.0			
GOVT 2301	1	22	22.0	1	20	20.0
GOVT 2302				1	26	26.0
HIST 1301	2	43	21.5	2	42	21.0
HIST 1302				2	45	22.5
MATH 1314				1	6	6.0
MUSI 1306				2	21	10.5
POFI 1301				1	9	9.0
PSYC 2301	1	16	16.0	1	7	7.0
SPAN 1411				1	9	9.0
SPCH 1315	1	18	18.0	2	37	18.5
<b>Total</b>	9	146		20	306	
<b>Average Class Size</b>			16.2			15.3

Courses are listed in the semester they were reported to the Coordinating Board.

(The second term in the fall is reported in the spring, and the second term in the spring is reported in the summer.)

## Average Class Size Traditional Format

	Fall 2000			Spring 2001		
	Number of Sections	Enrollment	Average Class Size	Number of Sections	Enrollment	Average Class Size
DRAM 1320				2	25	12.5
ENGL 1301	32	616	19.3	36	762	21.2
ENGL 1302	28	555	19.8	52	772	14.8
ENGL 2322	5	123	24.6			
ENGL 2323				4	104	26.0
ESOL 0354	3	39	13.0			
GOVT 2301	15	441	29.4	11	328	29.8
GOVT 2302				11	307	27.9
HIST 1301	25	793	31.7	16	525	32.8
HIST 1302				17	441	25.9
MATH 1314				29	743	25.6
MUSI 1306				7	45	6.4
POFI 1301				10	178	17.8
PSYC 2301	27	856	31.7	23	702	30.5
SPAN 1411				4	82	20.5
SPCH 1315	19	466	24.5	20	476	23.8
<b>Total</b>	154	3,889		242	5,490	
<b>Average Class Size</b>			25.3			22.7

Courses are listed in the semester they were reported to the Coordinating Board.

(The second term in the fall is reported in the spring, and the second term in the spring is reported in the summer.)

## Rapid Track Enrollment as a Proportion of the Total Course Enrollment

	Fall 1999			Spring 2000			Summer 2000		
	Traditional Format Enrollment During Semesters Rapid Track Course Offered	Rapid Track Enrollment	% Rapid Track	Traditional Format Enrollment During Semesters Rapid Track Course Offered	Rapid Track Enrollment	% Rapid Track	Traditional Format Enrollment During Semesters Rapid Track Course Offered	Rapid Track Enrollment	% Rapid Track
ART 1301	134	12	8.2%				19	25	56.8%
ENGL 1301	1,527	10	0.7%						
ENGL 1302	599	13	2.1%	1,191	30	2.5%	125	17	12.0%
ENGL 2322				0	9	100.0%			
ENGL 2328							0	11	100.0%
ESOL 0103				7	14	66.7%			
ESOL 0105				7	14	66.7%			
ESOL 0107				7	14	66.7%			
ECON 2301							65	15	18.8%
GOVT 2301	436	18	4.0%	415	12	2.8%			
GOVT 2302				370	18	4.6%	99	19	16.1%
HIST 1301	914	28	3.0%	614	59	8.8%			
HIST 1302				553	36	6.1%	118	44	27.2%
KINE 1106							27	9	25.0%
KINE 1306							10	14	58.3%
KINE 2106							6	2	25.0%
MATH 1314	941	15	1.6%	807	8	1.0%	220	5	2.2%
MUSI 1306				176	17	8.8%			
PSYC 2301	1,047	7	0.7%	791	27	3.3%			
SPAN 1411	128	10	7.2%	127	22	14.8%			
SPAN 1412				88	15	14.6%	28	8	22.2%
SPCH 1315	507	35	6.5%	474	56	10.6%	148	21	12.4%
SPCH 1318							20	6	23.1%
<b>Total</b>	<b>6,233</b>	<b>148</b>	<b>2.3%</b>	<b>5,627</b>	<b>351</b>	<b>5.9%</b>	<b>885</b>	<b>196</b>	<b>18.1%</b>
<b>Average Class Size</b>	<b>26.0</b>	<b>13.5</b>		<b>25.5</b>	<b>14.0</b>		<b>21.1</b>	<b>12.3</b>	

Courses are listed in the semester they were reported to the Coordinating Board.

(The second term in the fall is reported in the spring, and the second term in the spring is reported in the summer.)

## Average Class Size Rapid Track

	Fall 1999			Spring 2000			Summer 2000		
	Number of Sections	Enrollment	Average Class Size	Number of Sections	Enrollment	Average Class Size	Number of Sections	Enrollment	Average Class Size
ART 1301	1	12	12.0				2	25	12.5
ENGL 1301	1	10	10.0						
ENGL 1302	1	13	13.0	2	30	15.0	1	17	17.0
ENGL 2322				1	9	9.0			
ENGL 2328							1	11	11.0
ESOL 0103				1	14	14.0			
ESOL 0105				1	14	14.0			
ESOL 0107				1	14	14.0			
ECON 2301							1	15	15.0
GOVT 2301	1	18	18.0						
GOVT 2302				1	12	12.0	1	19	19.0
HIST 1301	2	28	14.0	1	18	18.0			
HIST 1302				3	59	19.7	2	44	22.0
KINE 1106				2	36	18.0	1	9	9.0
KINE 1306							1	14	14.0
KINE 2106							1	2	2.0
MATH 1314	1	15	15.0	1	8	8.0	1	5	5.0
MUSI 1306				2	17	8.5			
PSYC 2301	1	7	7.0	3	27	9.0			
SPAN 1411	1	10	10.0	2	22	11.0			
SPAN 1412				1	15	15.0	1	8	8.0
SPCH 1315	2	35	17.5	3	56	18.7	2	21	10.5
SPCH 1318							1	6	6.0
<b>Total</b>	<b>11</b>	<b>148</b>		<b>25</b>	<b>351</b>		<b>16</b>	<b>196</b>	
<b>Average Class Size</b>			<b>13.5</b>			<b>14.0</b>			<b>12.3</b>

Courses are listed in the semester they were reported to the Coordinating Board.

(The second term in the fall is reported in the spring, and the second term in the spring is reported in the summer.)

### Average Class Size Traditional Format

	Fall 1999			Spring 2000			Summer 2000		
	Number of Sections	Enrollment	Average Class Size	Number of Sections	Enrollment	Average Class Size	Number of Sections	Enrollment	Average Class Size
ART 1301	4	134	33.5				1	19	19.0
ENGL 1301	77	1,527	19.8						
ENGL 1302	29	599	20.7	63	1,191	18.9	7	125	17.9
ESOL 0103				1	7	7.0			
ESOL 0105				1	7	7.0			
ESOL 0107				1	7	7.0			
ECON 2301							3	65	21.7
GOVT 2301	13	436	33.5	12	415	34.6			
GOVT 2302				13	370	28.5	4	99	24.8
HIST 1301	26	914	35.2	17	614	36.1			
HIST 1302				19	553	29.1	4	118	29.5
KINE 1106							1	27	27.0
KINE 1306							1	10	10.0
KINE 2106							1	6	6.0
MATH 1314	33	941	28.5	30	807	26.9	11	220	20.0
MUSI 1306				6	176	29.3			
PSYC 2301	31	1,047	33.8	26	791	30.4			
SPAN 1411	6	128	21.3	7	127	18.1			
SPAN 1412				5	88	17.6	2	28	14.0
SPCH 1315	21	507	24.1	20	474	23.7	6	148	24.7
SPCH 1318							1	20	20.0
<b>Total</b>	240	6,233		221	5,627		42	885	
<b>Average Class Size</b>			26.0			25.5			21.1

Courses are listed in the semester they were reported to the Coordinating Board.

(The second term in the fall is reported in the spring, and the second term in the spring is reported in the summer.)

## Rapid Track Student Demographics

	Fall 2000			Spring 2001		
	Rapid Track		Collegewide	Rapid Track		Collegewide
<b>Unduplicated Headcount</b>	<b>128</b>		<b>9,936</b>	<b>251</b>		<b>9,634</b>
<b>Gender</b>						
Male	43	33.6%	41.1%	84	33.5%	41.5%
Female	85	66.4%	58.9%	167	66.5%	58.5%
<b>Race/Ethnicity</b>						
White	55	43.0%	42.1%	100	39.8%	42.1%
Hispanic	61	47.7%	52.9%	137	54.6%	52.5%
Black	1	0.8%	2.0%	5	2.0%	2.3%
Asian/Pacific Islander	1	0.8%	1.2%	2	0.8%	1.2%
Native American	1	0.8%	0.1%	1	0.4%	0.1%
Other	9	7.0%	1.6%	6	2.4%	1.8%
<b>Age</b>						
Less than 20	19	14.8%	24.2%	36	14.3%	21.7%
20-24	52	40.6%	34.3%	121	48.2%	35.1%
25-29	17	13.3%	15.6%	41	16.3%	15.4%
30-34	11	8.6%	8.6%	13	5.2%	9.3%
35-39	14	10.9%	6.1%	21	8.4%	6.4%
40-44	5	3.9%	4.9%	7	2.8%	5.4%
45-49	7	5.5%	3.4%	7	2.8%	3.5%
50+	3	2.3%	2.8%	5	2.0%	3.2%
<b>Mean Age</b>	27.1		24.7	25.4		26.7
<b>Highest Degree/Certificate already earned</b>						
None	0	0.0%	4.3%	6	2.4%	4.4%
High School Diploma	121	94.5%	86.7%	228	90.8%	85.9%
Associate's	6	4.7%	3.6%	8	3.2%	3.6%
Certificate	1	0.8%	2.8%	7	2.8%	3.1%
Bachelor's	0	0.0%	2.0%	0	0.0%	2.4%
Other	0	0.0%	0.6%	2	0.8%	0.6%

Note: Unduplicated headcount as reported by semester to the Texas Higher Education Coordinating Board

## Rapid Track Student Demographics

	Fall 1999			Spring 2000			Summer 2000		
	Rapid Track		Collegewide	Rapid Track		Collegewide	Rapid Track		Collegewide
<b>Unduplicated Headcount</b>	<b>126</b>		<b>9,968</b>	<b>253</b>		<b>9,714</b>	<b>155</b>		<b>6,849</b>
<b>Gender</b>									
Male	41	32.5%	40.7%	78	30.8%	41.5%	51	32.9%	39.6%
Female	85	67.5%	59.3%	175	69.2%	58.5%	104	67.1%	60.4%
<b>Race/Ethnicity</b>									
White	54	42.9%	42.9%	127	50.2%	42.8%	79	51.0%	41.7%
Hispanic	65	51.6%	52.6%	106	41.9%	52.3%	66	42.6%	52.3%
Black	3	2.4%	1.8%	5	2.0%	2.1%	4	2.6%	2.5%
Asian/Pacific Islander	2	1.6%	1.3%	4	1.6%	1.2%	3	1.9%	1.5%
Native American	0	0.0%	0.1%	1	0.4%	0.1%	0	0.0%	0.1%
Other	2	1.6%	1.4%	10	4.0%	1.5%	3	1.9%	1.9%
<b>Age</b>									
Less than 20	18	14.3%	23.7%	33	13.0%	21.1%	13	8.4%	16.4%
20-24	54	42.9%	34.2%	99	39.1%	34.8%	69	44.5%	36.3%
25-29	25	19.8%	15.6%	52	20.6%	16.2%	39	25.2%	18.4%
30-34	11	8.7%	8.6%	22	8.7%	8.9%	12	7.7%	9.8%
35-39	6	4.8%	6.8%	11	4.3%	6.9%	12	7.7%	7.7%
40-44	6	4.8%	5.2%	17	6.7%	5.4%	6	3.9%	5.3%
45-49	4	3.2%	3.2%	9	3.6%	3.6%	3	1.9%	3.2%
50+	2	1.6%	2.7%	10	4.0%	3.1%	1	0.6%	2.9%
<b>Mean Age</b>	25.9		26.3	27.3		26.8	25.9		26.7
<b>Highest Degree/Certificate already earned</b>									
None	0	0.0%	4.0%	6	2.4%	4.1%	1	0.6%	1.6%
High School Diploma	114	90.5%	86.8%	223	88.1%	86.7%	144	92.9%	85.6%
Associate's	6	4.8%	3.6%	16	6.3%	3.4%	7	4.5%	5.2%
Certificate	2	1.6%	3.0%	2	0.8%	3.1%	2	1.3%	3.6%
Bachelor's	3	2.4%	2.0%	5	2.0%	2.1%	1	0.6%	2.4%
Other	1	0.8%	0.6%	1	0.4%	0.6%	0	0.0%	0.7%

Note: Unduplicated headcount as reported by semester to the Texas Higher Education Coordinating Board

## Grade Distribution Comparisons for Rapid Track and Traditional Instruction

		Total Grades	Percent Passing (A-D)	Percent Failure (F, WF)	Percent Withdrawal	Percent Incomplete
<b>Fall 2000</b>						
Rapid Track sections		261	75.9%	9.6%	10.3%	4.2%
Courses w/R.T. sections		6,071	65.5%	12.9%	19.5%	2.0%
All college-level		19,772	68.4%	11.0%	17.8%	2.8%
DRAM 1320	Rapid Track:	10	90.0%	0.0%	10.0%	0.0%
	Traditional:	14	92.9%	7.1%	0.0%	0.0%
ENGL 1301	Rapid Track:	18	61.1%	0.0%	22.2%	16.7%
	Traditional:	1,535	67.2%	11.7%	17.3%	3.8%
ENGL 1302	Rapid Track:	11	63.6%	18.2%	18.2%	0.0%
	Traditional:	714	60.2%	9.8%	26.6%	3.4%
ENGL 2322	Rapid Track:	13	53.8%	30.8%	15.4%	0.0%
	Traditional:	123	76.4%	2.4%	18.7%	2.4%
ESOL 0354	Rapid Track:	6	100.0%	0.0%	0.0%	<b>(R)</b> 0.0%
	Traditional:	37	100.0%	0.0%	0.0%	0.0%
GOVT 2301	Rapid Track:	22	77.3%	4.5%	13.6%	4.5%
	Traditional:	508	71.5%	16.1%	11.0%	1.4%
GOVT 2302	Rapid Track:	26	88.5%	3.8%	3.8%	3.8%
	Traditional:	284	76.1%	6.3%	15.1%	2.5%
HIST 1301	Rapid Track:	43	86.0%	7.0%	7.0%	0.0%
	Traditional:	889	54.3%	19.2%	25.5%	0.9%
HIST 1302	Rapid Track:	45	84.4%	8.9%	6.7%	0.0%
	Traditional:	394	45.7%	23.4%	31.0%	0.0%
MUSI 1306	Rapid Track:	15	33.3%	46.7%	0.0%	20.0%
	Traditional:	169	63.3%	11.2%	24.9%	0.6%
PSYC 2301	Rapid Track:	16	68.8%	18.8%	12.5%	0.0%
	Traditional:	938	73.5%	12.4%	13.0%	1.2%
SPCH 1315	Rapid Track:	36	75.0%	0.0%	16.7%	8.3%
	Traditional:	466	71.9%	7.1%	20.4%	0.6%

## Grade Distribution Comparisons for Rapid Track and Traditional Instruction

		Total Grades	Percent Passing (A-D)	Percent Failure (F, WF)	Percent Withdrawal	Percent Incomplete
<b>Summer 2000</b>						
Rapid Track sections		196	79.1%	5.6%	14.3%	1.0%
Courses w/R.T. sections		1,036	79.2%	7.2%	11.4%	2.2%
All college-level		9,556	83.2%	5.0%	9.1%	2.7%
ARTS 1301	Rapid Track:	25	88.0%	4.0%	4.0%	4.0%
	Traditional:	33	93.9%	0.0%	3.0%	3.0%
ECON 2301	Rapid Track:	15	73.3%	6.7%	20.0%	0.0%
	Traditional:	88	80.7%	2.3%	14.8%	1.1%
ENGL 1302	Rapid Track:	17	47.1%	11.8%	41.2%	0.0%
	Traditional:	157	77.7%	3.8%	13.4%	5.1%
ENGL 2328	Rapid Track:	11	81.8%	9.1%	9.1%	0.0%
	Traditional:	0				
GOVT 2302	Rapid Track:	19	89.5%	0.0%	5.3%	5.3%
	Traditional:	99	91.9%	2.0%	6.1%	0.0%
HIST 1302	Rapid Track:	44	77.3%	9.1%	13.6%	0.0%
	Traditional:	150	80.7%	10.0%	8.0%	1.3%
KINE 1106	Rapid Track:	9	100.0%	0.0%	0.0%	0.0%
	Traditional:	36	75.0%	5.6%	13.9%	5.6%
KINE 1306	Rapid Track:	14	100.0%	0.0%	0.0%	0.0%
	Traditional:	24	100.0%	0.0%	0.0%	0.0%
KINE 2106	Rapid Track:	2	100.0%	0.0%	0.0%	0.0%
	Traditional:	8	87.5%	0.0%	12.5%	0.0%
MATH 1314	Rapid Track:	5	60.0%	0.0%	40.0%	0.0%
	Traditional:	221	59.3%	17.2%	20.8%	2.7%
SPAN 1412	Rapid Track:	8	50.0%	0.0%	50.0%	0.0%
	Traditional:	28	92.9%	0.0%	7.1%	0.0%
SPCH 1315	Rapid Track:	21	81.0%	4.8%	14.3%	0.0%
	Traditional:	167	86.2%	6.0%	6.0%	1.8%
SPCH 1318	Rapid Track:	6	100.0%	0.0%	0.0%	0.0%
	Traditional:	26	96.2%	0.0%	3.8%	0.0%

## Grade Distribution Comparisons for Rapid Track and Traditional Instruction

		Total Grades	Percent Passing (A-D)	Percent Failure (F, WF)	Percent Withdrawal	Percent Incomplete
<b>Spring 2000</b>						
Rapid Track sections		350	80.9%	4.3%	9.4%	5.7%
Courses w/R.T. sections		5,645	60.2%	12.8%	22.6%	4.3%
All college-level		23,215	69.7%	8.8%	18.5%	3.0%
ENGL 1302	Rapid Track:	29	69.0%	10.3%	17.2%	3.4%
	Traditional:	1,204	54.8%	7.7%	21.3%	16.2%
ENGL 2322	Rapid Track:	9	88.9%	0.0%	0.0%	11.1%
	Traditional:	0				
ESOL 103	Rapid Track:	14	78.6%	0.0%	0.0%	(R) 21.4%
	Traditional:	8	62.5%	0.0%	25.0%	12.5%
ESOL 105	Rapid Track:	14	78.6%	0.0%	0.0%	(R) 21.4%
	Traditional:	8	50.0%	0.0%	25.0%	25.0%
ESOL 107	Rapid Track:	14	78.6%	0.0%	0.0%	(R) 21.4%
	Traditional:	7	57.1%	0.0%	28.6%	14.3%
GOVT 2301	Rapid Track:	12	100.0%	0.0%	0.0%	0.0%
	Traditional:	414	69.3%	12.3%	17.4%	1.0%
GOVT 2302	Rapid Track:	18	94.4%	0.0%	5.6%	0.0%
	Traditional:	371	75.5%	11.3%	12.9%	0.5%
HIST 1301	Rapid Track:	58	84.5%	5.2%	8.6%	1.7%
	Traditional:	615	49.9%	21.5%	28.5%	0.2%
HIST 1302	Rapid Track:	36	75.0%	8.3%	16.7%	0.0%
	Traditional:	553	61.1%	11.6%	26.4%	1.3%
MATH 1314	Rapid Track:	8	87.5%	12.5%	0.0%	0.0%
	Traditional:	807	46.3%	23.9%	28.5%	1.2%
MUSI 1306	Rapid Track:	17	41.2%	5.9%	17.6%	35.3%
	Traditional:	176	65.9%	5.7%	27.3%	1.1%
PSYC 2301	Rapid Track:	27	81.5%	3.7%	14.8%	0.0%
	Traditional:	791	66.5%	13.7%	18.5%	1.4%
SPAN 1411	Rapid Track:	24	79.2%	0.0%	12.5%	8.3%
	Traditional:	128	63.3%	4.7%	29.7%	2.3%
SPAN 1412	Rapid Track:	15	86.7%	13.3%	0.0%	0.0%
	Traditional:	88	64.8%	4.5%	26.1%	4.5%
SPCH 1315	Rapid Track:	55	89.1%	1.8%	7.3%	1.8%
	Traditional:	475	75.8%	4.4%	18.9%	0.8%

## Grade Distribution Comparisons for Rapid Track and Traditional Instruction

		Total Grades	Percent Passing (A-D)	Percent Failure (F, WF)	Percent Withdrawal	Percent Incomplete
<b>Fall 1999</b>						
Rapid Track sections		322	78.9%	6.2%	9.6%	5.3%
Courses w/R.T. sections		7,367	62.1%	13.5%	21.3%	3.1%
All college-level		25,014	72.7%	9.2%	16.2%	1.9%
ART 1301	Rapid Track:	12	83.3%	16.7%	0.0%	0.0%
	Traditional:	134	85.1%	2.2%	11.2%	1.5%
ENGL 1301	Rapid Track:	10	60.0%	30.0%	10.0%	0.0%
	Traditional:	1,566	59.1%	10.7%	21.5%	8.7%
ENGL 1302	Rapid Track:	31	61.3%	16.1%	19.4%	3.2%
	Traditional:	700	54.7%	10.3%	30.1%	4.9%
ESOL 0103	Rapid Track:	14	78.6%	0.0%	0.0%	(R) 21.4%
	Traditional:	0				
ESOL 0105	Rapid Track:	14	78.6%	0.0%	0.0%	(R) 21.4%
	Traditional:	0				
ESOL 0107	Rapid Track:	14	78.6%	0.0%	0.0%	(R) 21.4%
	Traditional:	0				
GOVT 2301	Rapid Track:	18	83.3%	0.0%	16.7%	0.0%
	Traditional:	496	82.7%	8.1%	9.3%	0.0%
GOVT 2302	Rapid Track:	18	94.4%	0.0%	5.6%	0.0%
	Traditional:	243	73.3%	10.7%	16.0%	0.0%
HIST 1301	Rapid Track:	42	85.7%	0.0%	14.3%	0.0%
	Traditional:	986	55.4%	18.4%	25.8%	0.5%
HIST 1302	Rapid Track:	36	75.0%	8.3%	16.7%	0.0%
	Traditional:	342	52.6%	21.3%	24.3%	1.8%
MATH 1314	Rapid Track:	15	33.3%	0.0%	6.7%	60.0%
	Traditional:	941	46.7%	26.7%	26.1%	0.5%
MUSI 1306	Rapid Track:	11	18.2%	9.1%	18.2%	54.5%
	Traditional:	158	67.7%	12.7%	19.0%	0.6%
PSYC 2301	Rapid Track:	16	87.5%	6.3%	6.3%	0.0%
	Traditional:	1,089	72.1%	9.2%	16.3%	2.4%
SPAN 1411	Rapid Track:	10	100.0%	0.0%	0.0%	0.0%
	Traditional:	155	78.1%	3.2%	16.8%	1.9%
SPAN 1412	Rapid Track:	15	86.7%	13.3%	0.0%	0.0%
	Traditional:	31	80.6%	3.2%	16.1%	0.0%
SPCH 1315	Rapid Track:	55	85.5%	5.5%	7.3%	1.8%
	Traditional:	507	67.7%	11.0%	19.7%	1.6%

## Rapid Track Survey Response Fall 2000 and Spring 2001

		Count	Col %
Have you taken any Rapid Track courses before this semester?	Yes	64	39.0%
	No	100	61.0%
Total		164	
What is your overall opinion of Rapid Track as an alternative schedule option?	Excellent	119	73.0%
	Good	42	25.8%
	Fair	2	1.2%
Total		163	
Do you believe that you learn as much in a Rapid Track course as you do in a traditional semester course?	Yes	155	96.3%
	No	6	3.7%
Total		161	
Given Rapid Track's accelerated format, do you believe there is enough time to adequately cover the material?	Yes	152	94.4%
	No	9	5.6%
Total		161	
Would you recommend Rapid Track to other students?	Yes	160	98.2%
	No	3	1.8%
Total		163	
Do you intend to take Rapid Track courses during the next semester?	Yes	114	73.5%
	No	41	26.5%
Total		155	
Do you intend to get a degree or certificate from Del Mar College?	Yes	108	69.2%
	No	48	30.8%
Total		156	
Do you intend to get a degree/certificate by using only the Rapid Track format?	Yes	15	9.6%
	No	141	90.4%
Total		156	

## Rapid Track Survey Response Fall 2000 and Spring 2001

		Frequency	Valid Percent
<b>How many Rapid Track courses are you enrolled in?</b>	1	103	62.8
	2	41	25.0
	3	17	10.4
	4	2	1.2
	6	1	.6
	Total	164	100.0

		Frequency	Valid Percent
<b>In which of the following divisions does your major belong?</b>	Arts & Sciences	83	52.5
	Business	30	19.0
	Occupational Ed. & Tech.	31	19.6
	Undecided	14	8.9
	Total	158	100.0

		Frequency	Valid Percent
<b>Have you taken any Rapid Track courses before this semester?</b>	Yes	64	39.0
	No	100	61.0
	Total	164	100.0

		Frequency	Valid Percent
<b>If yes, how many courses did you complete?</b>	1	24	34.3
	2	21	30.0
	3	12	17.1
	4	4	5.7
	5	2	2.9
	6 or more	7	10.0
	Total	70	100.0

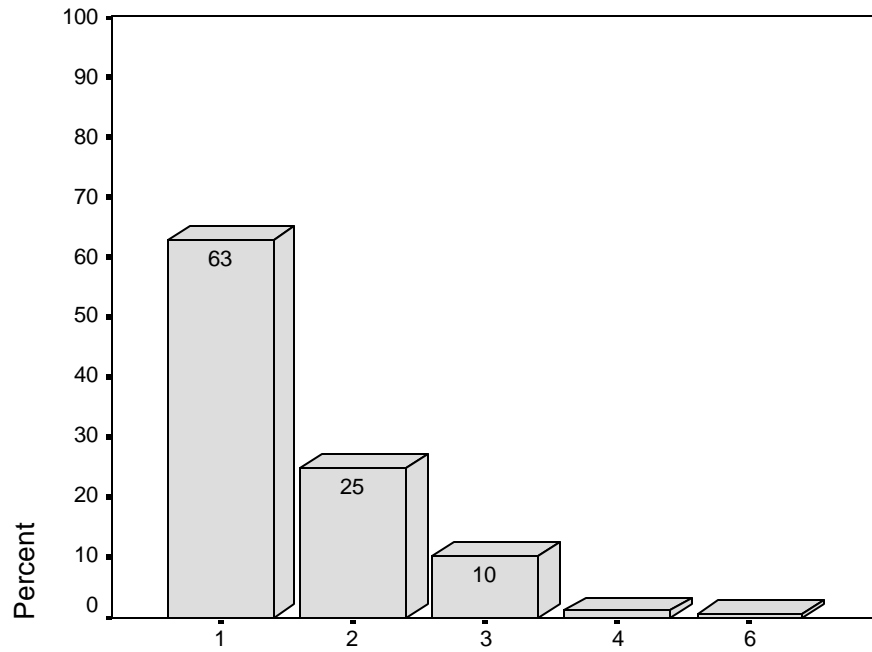
## Rapid Track Survey Response Fall 2000 and Spring 2001

		Frequency	Valid Percent
<b>How many courses are you enrolled in this semester that are NOT in the Rapid Track format?</b>	None	44	27.2
	1	35	21.6
	2	40	24.7
	3	25	15.4
	4	11	6.8
	5	5	3.1
	6	1	.6
	More than 6	1	.6
	Total	162	100.0

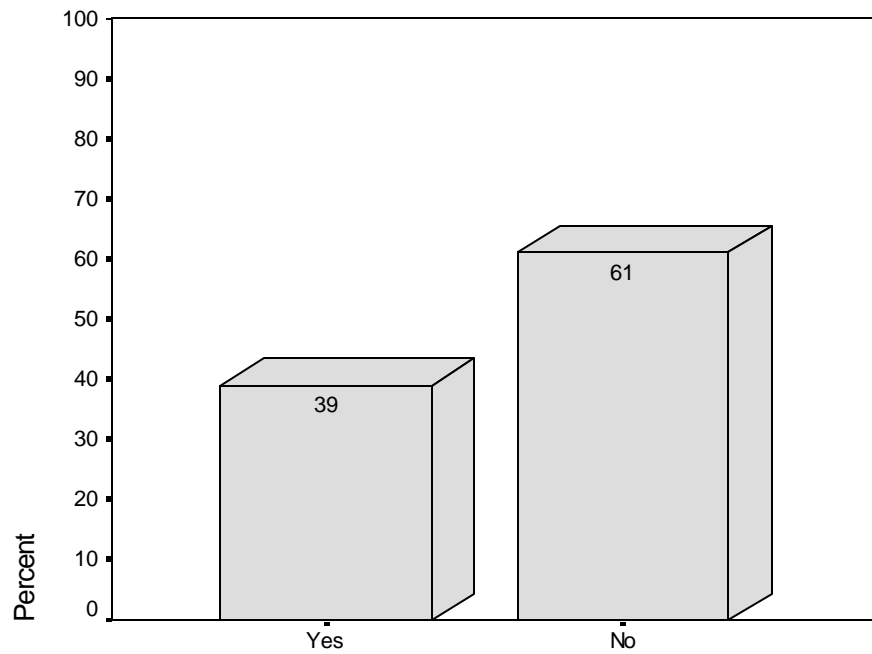
		Frequency	Valid Percent
<b>How did you find out about Rapid Track?</b>	Class schedule	111	71.2
	Billboard	2	1.3
	Posted flyer	7	4.5
	Bus stop bench	1	.6
	Brochure	10	6.4
	Newspaper ad	6	3.8
	Other	19	12.2
	Total	156	100.0

		Count	Col %
<b>What is your gender?</b>	Male	49	31.4%
	Female	107	68.6%
Total		156	
<b>What is your age?</b>	Under 20	19	12.0%
	20-24	82	51.9%
	25-29	25	15.8%
	30-34	7	4.4%
	35-39	12	7.6%
	40-44	7	4.4%
	45-49	4	2.5%
	50+	2	1.3%
Total		158	

# Rapid Track Survey Response Fall 2000 and Spring 2001

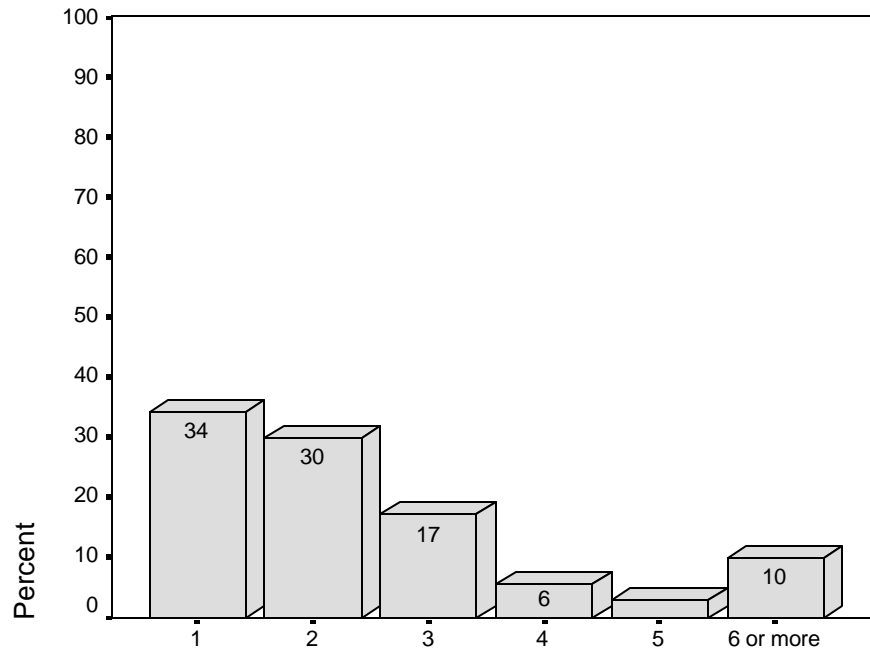


How many Rapid Track courses are you enrolled in?

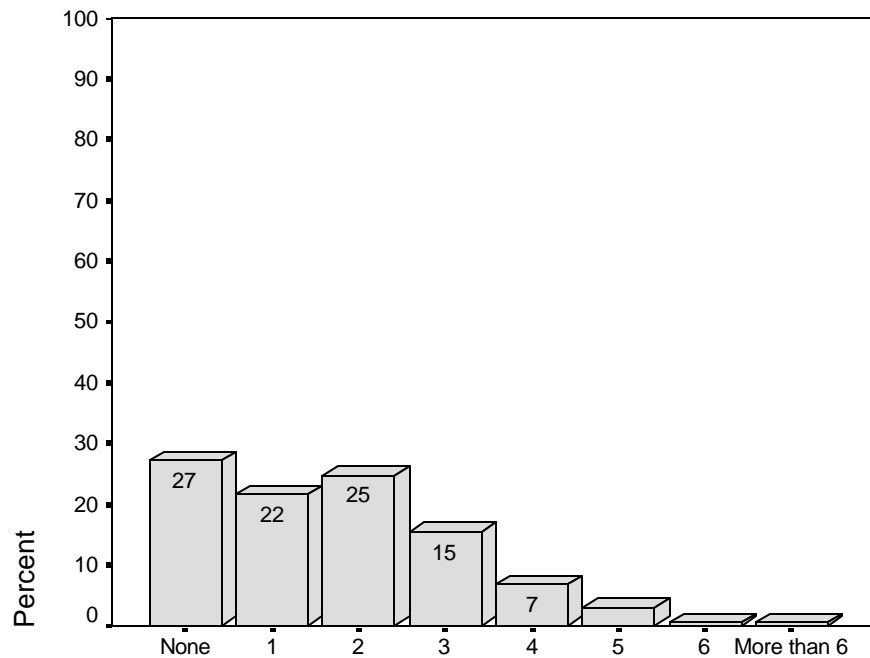


Have you taken any Rapid Track courses before this semester?

## Rapid Track Survey Response Fall 2000 and Spring 2001

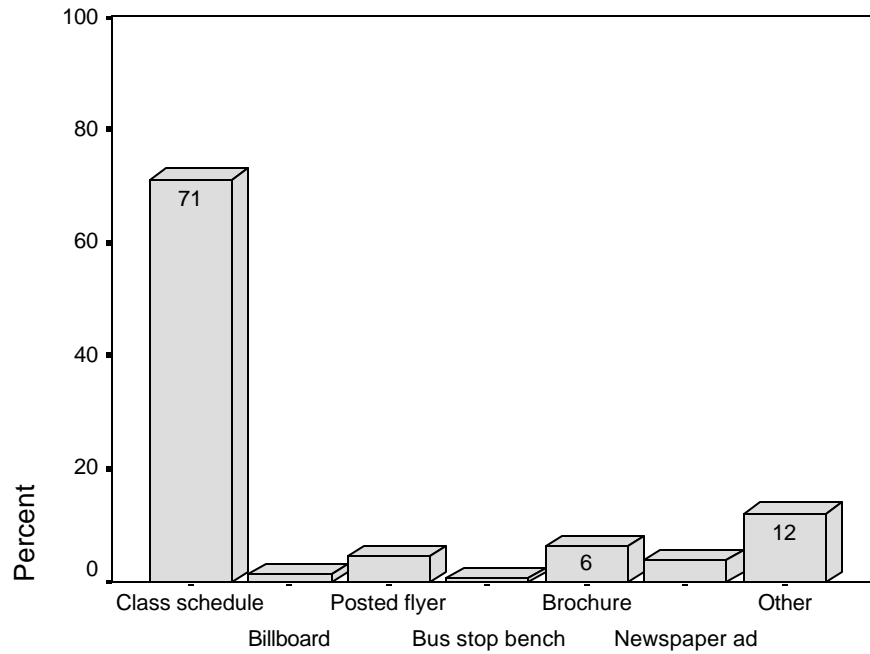


If yes, how many courses did you complete?

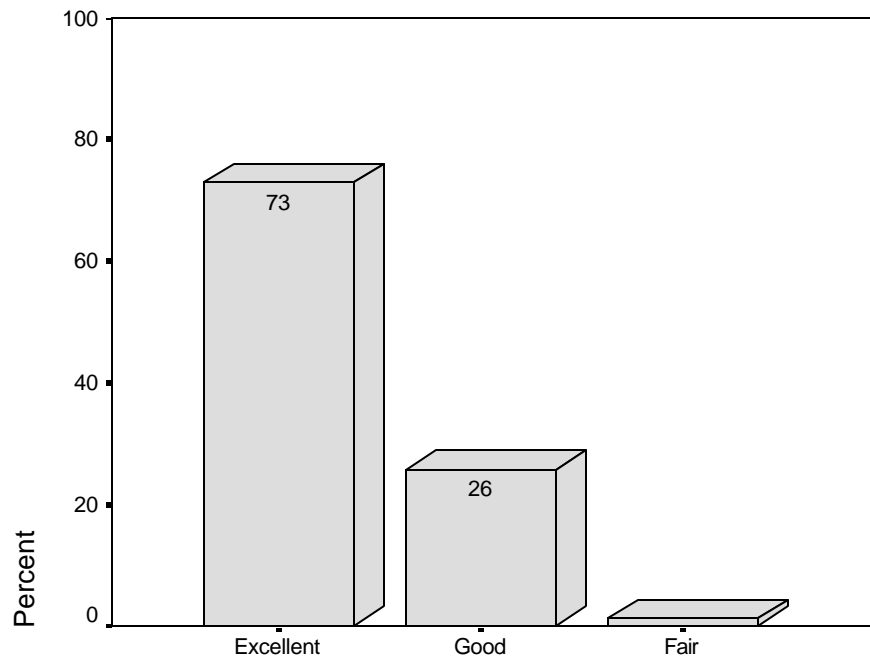


How many courses are you enrolled in that are NOT in the Rapid Track?

## Rapid Track Survey Response Fall 2000 and Spring 2001

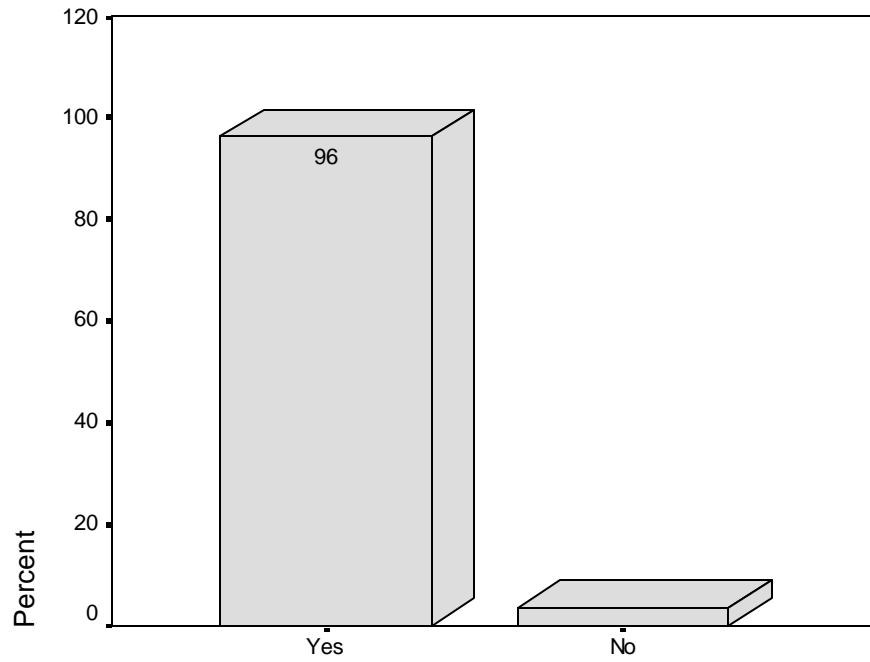


How did you find out about Rapid Track?

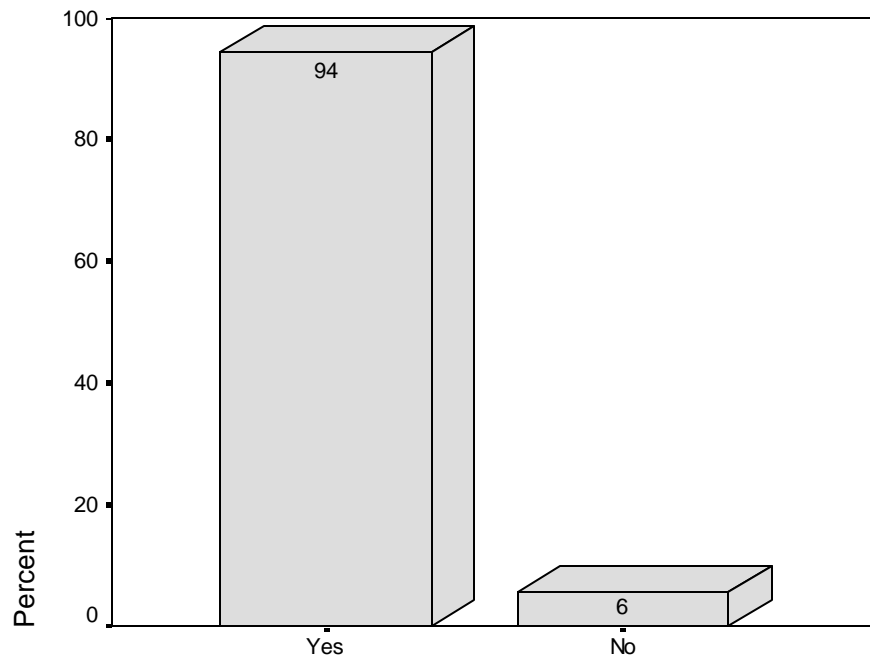


Your overall opinion of Rapid Track as an alternative schedule option?

## Rapid Track Survey Response Fall 2000 and Spring 2001

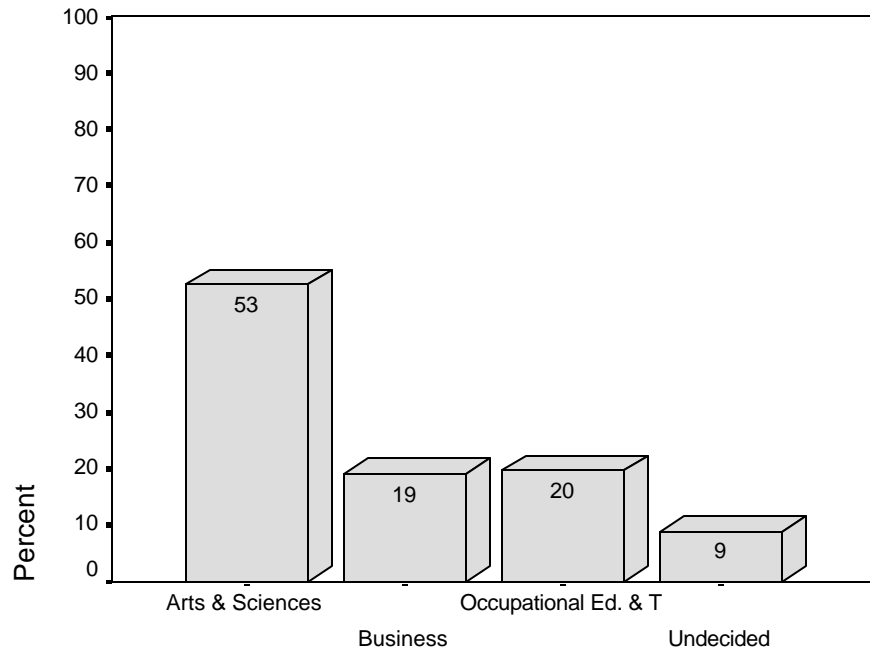


You learn as much in a R.T. course as you do in a traditional course.



Do you believe there is enough time to cover material in a R.T. course?

## Rapid Track Survey Response Fall 2000 and Spring 2001



In which of the following divisions does your major belong?

## Rapid track Survey Response Fall 1999 and Spring 2000

		Count	Col %
Have you taken any Rapid Track courses before this semester?	Yes	54	38.3%
	No	87	61.7%
What is your overall opinion of Rapid Track as an alternative schedule option?	Excellent	93	66.4%
	Good	41	29.3%
	Fair	6	4.3%
Do you believe that you learn as much in a Rapid Track course as you do in a traditional semester course?	Yes	125	89.3%
	No	15	10.7%
Given Rapid Tracks accelerated format, do you believe there is a enough time to adequately cover the materials?	Yes	128	91.4%
	No	12	8.6%
Would you recommend Rapid Track to other students?	Yes	138	98.6%
	No	2	1.4%
Do you intend to get a degree or certificate from Del Mar College?	Yes	77	58.3%
	No	55	41.7%
Do you intend to get a degree/certificate by using only the Rapid Track format?	Yes	6	5.0%
	No	113	95.0%
Do you intend to take Rapid Track courses during the next semester?	Yes	96	71.6%
	No	38	28.4%

## Rapid track Survey Response Fall 1999 and Spring 2000

How many Rapid Track courses are you currently enrolled in?		Frequency	Valid Percent
1		70	49.3
2		32	22.5
3		39	27.5
4		1	.7
Total		142	100.0

In which of the following divisions does your major belong?		Frequency	Valid Percent
Arts & Sciences		66	49.3
Business		31	23.1
Occupational Ed & Tech		8	6.0
Undecided		29	21.6
Total		134	100.0

Have you taken any Rapid Track courses before this semester?		Frequency	Valid Percent
Yes		54	38.3
No		87	61.7
Total		141	100.0

If yes, how many courses did you complete?		Frequency	Valid Percent
1		23	39.0
2		23	39.0
3		8	13.6
4		1	1.7
5		2	3.4
6 or more		2	3.4
Total		59	100.0

How many courses are you enrolled in this		Frequency	Valid Percent
	None	59	41.8
	1	28	19.9
	2	22	15.6
	3	14	9.9
	4	7	5.0
	5	7	5.0
	6	2	1.4
	More than 6	2	1.4
	Total	141	100.0

## Rapid track Survey Response Fall 1999 and Spring 2000

How did you find out about Rapid Track?	Frequency	Valid Percent
Class schedule	77	55.8
Billboard	4	2.9
Posted flyer	28	20.3
Brochure	5	3.6
Newspaper ad	2	1.4
Other	22	15.9
Total	138	100.0

What is your age?	Frequency	Valid Percent
Under 20	14	10.4
20-24	46	34.3
25-29	24	17.9
30-34	12	9.0
35-39	3	2.2
40-44	16	11.9
45-49	4	3.0
50+	15	11.2
Total	134	100.0

What is your gender?	Frequency	Valid Percent
Male	41	30.8
Female	92	69.2
Total	133	100.0