

## Faculty and Staff

Fall 2013	Full-Time	Part-Time	Total
<b>Total Faculty</b>	<b>285</b>	<b>45.0%</b>	<b>348</b>
<b>Total Staff</b>	<b>287</b>	<b>48.2%</b>	<b>309</b>
<b>Faculty Gender</b>			
Female	143	44.3%	180
Male	142	45.8%	168
<b>Faculty Ethnicity</b>			
Black	9	47.4%	10
Hispanic	71	40.1%	106
White	193	48.3%	207
Other	10	45.5%	12
Unknown	2	13.3%	13
<b>Faculty Classification</b>			
Tenured	136	100.0%	0
Tenured Trk	123	100.0%	0
No Tenure	28	7.4%	348
<b>*FTE Teaching Faculty 436</b>			
<b>*Student-to-Faculty Ratio 17:1</b>			

## Special Programs

2012-13	Enroll	Contact Hours
Collegiate HS	487	25,344
Dual Credit	3173	182,984
<b>Total High School</b>	<b>3,660</b>	<b>208,328</b>
Dual Cred Internet	1,374	68,960
Internet/eLine	8,556	463,808
Hybrid/Other	342	25,712
<b>Total eLearning</b>	<b>10,272</b>	<b>558,480</b>
Eight-Week	620	31,984
Maymester/Rapid	406	20,240
Weekend	532	45,984
<b>Total Flex Scheduling</b>	<b>1,558</b>	<b>98,208</b>
<b>Total Off-Campus</b>	<b>303</b>	<b>21,280</b>
<b>Total Special Programs</b>	<b>15,793</b>	<b>817,336</b>

## Continuing Education Student Profile 2012-13

Gender	Enroll	Percent
Female	2011	40.2%
Male	2987	59.8%
<b>Ethnicity/Race</b>		
Hispanic	3055	61.1%
White, non-Hispanic	1369	27.4%
Black, non-Hispanic	143	2.8%
Other	431	8.6%
<b>Total Headcount</b>		

CE Funding Type	State	TEA
<b>Annual Contact Hours</b>	318,802	230,362

## Financial Aid

2012-13	Students	Amount
PELL Grants	5,092	\$16,194,756
Other Fed/State Financial Aid	5450	\$9,979,488
Scholarships	762	\$806,713
<b>Total</b>	<b>11,304</b>	<b>\$26,980,957</b>

## Strategic Planning and Institutional Research

Lenora Keas, Vice President of Workforce Development and Strategic Initiatives

Sushil Pallemoni, Director

Jane Haas, Research Associate

Dianna Guerrero, Research Associate

Leilani Crown, Administrative Assistant

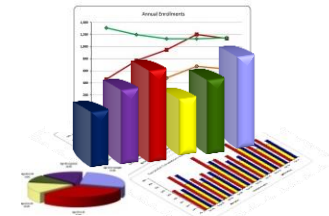
Tel: 361-698-1207

Fax: 361-698-1090

<http://www.delmar.edu/spir>



## 2013-2014 Fact Sheet



### Highlights

- Over \$26 million in financial aid was awarded to students for the 2012-13 academic year.
- A total of 1,655 degrees and certificates were awarded in 2012-13, which represents a 10 percent increase from the 2011-2012 academic year.
- Women represented 52 percent of the 2012-2013 graduates.
- Seventy-one percent of all students are classified as part-time.
- The proportion of students receiving financial assistance in 2012-2013 who are members of racial or ethnic minorities was 69 percent.
- Eighty-one percent of Del Mar College students are from Nueces County, and ten percent are from San Patricio County.
- Fall 2013 credit headcount enrollment was 10,502, which is down 4.8 percent from fall 2012.

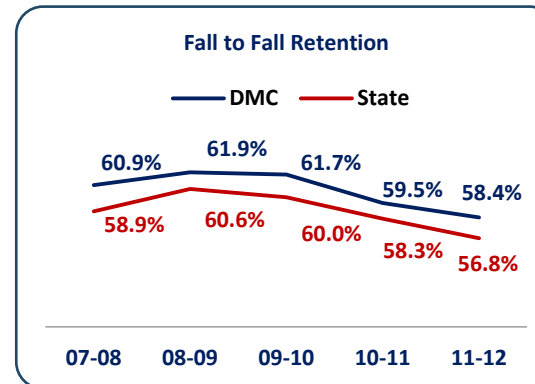
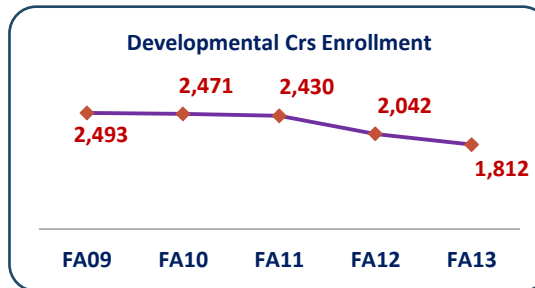
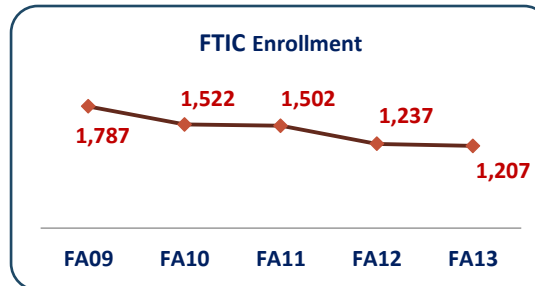
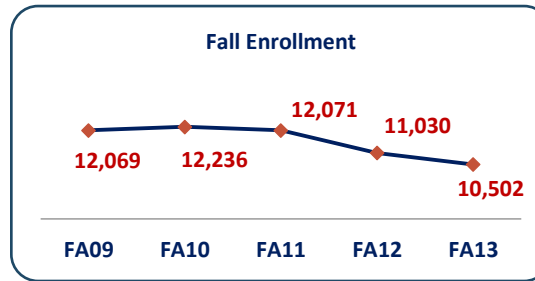
### Student Profile Fall 2013

Student Headcount	Total	Percent
Full-time	3,048	29.0%
Part-time	7,454	71.0%
<b>Total Headcount</b>	<b>10,502</b>	
<b>Full-time Equivalent</b>	<b>7,262</b>	
<b>Gender</b>		
Female	5,943	56.6%
Male	4,559	43.4%
<b>Classification</b>		
Freshman	7,030	66.9%
Sophomore	2,501	23.8%
Other	971	9.2%
<b>Ethnicity/Race</b>		
Hispanic	6,612	63.0%
White, non-Hispanic	2,882	27.4%
Black, non-Hispanic	327	3.1%
Other	681	6.5%
<b>Tuition Status</b>		
In-District	8,493	80.9%
Out-of-District	1,742	16.6%
Out-of-State/Intl	267	2.5%
<b>Dual Credit</b>	<b>1,353</b>	<b>13%</b>
<b>Average SCH Per Student</b>	<b>8.3</b>	
<b>Average Age</b>	<b>25.3</b>	

### Contact Hours/SCH Fall 2013

Division	Contact Hours	SCH
Arts & Sciences	1,108,976	57,500
Bus Prof & Tech	818,672	29,651
<b>Total</b>	<b>1,927,648</b>	<b>87,151</b>

### Five Year Enrollment Trends



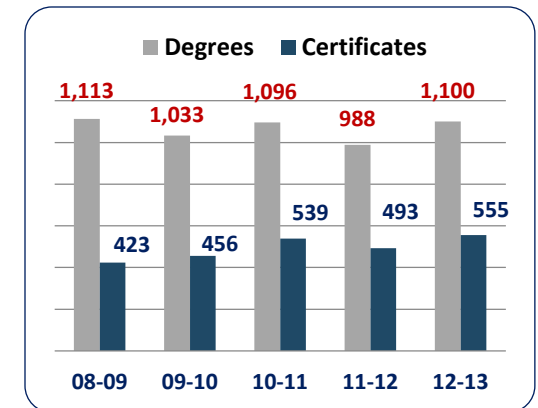
### Degrees and Certificates 2012-13

Degree/Certificate	Male	Percent	Female	Percent
AA	179	10.8%	334	20.2%
AAS	207	12.5%	345	20.8%
AAT	1	0.1%	18	1.1%
AS	11	0.7%	5	0.3%
CER	402	24.3%	153	9.2%
<b>Total</b>	<b>800</b>	<b>48.3%</b>	<b>855</b>	<b>51.7%</b>

Ethnicity	Male	Percent	Female	Percent
Hispanic/Latino	456	27.6%	486	29.4%
White	265	16.0%	266	16.1%
Black	10	0.6%	28	1.7%
Other	65	3.9%	79	4.8%
<b>Total</b>	<b>796</b>	<b>48.1%</b>	<b>859</b>	<b>51.9%</b>

Other Awards	CCC	FOS	MSA	Total
<b>Total</b>	<b>780</b>	<b>74</b>	<b>31</b>	<b>885</b>

### Degrees and Certificates 2008-13



2013	Total Examinees	Pass	% Pass
GED	947	636	67%