



Emerging Technology Building Expansion



WEST CAMPUS

DC DEL MAR
COLLEGE

Dreams. Delivered.®

Emerging Technology Building Expansion

As economic growth continues in the Coastal Bend, DMC serves as the resource to ensure our region's workforce is globally competitive. The Emerging Technology Building (ETB) Expansion is designed to play a key role in that function.

The facility will provide 24,000 gross square feet of additional space for instruction, create a sense of community and house comprehensive learning resources previously found only on the East Campus.

DMC's Department of Adult Education and Literacy will gain much-needed additional space for the General Education Development (GED), English for Speakers of Other Languages (ESL) and Career Pathways programs.

Campus culture

The GED program, long housed in portable buildings on the West Campus, will have ample classrooms, computers and office space to accommodate future growth.

"We want to integrate the GED population into the campus culture, expose them to all the opportunities that DMC offers and encourage them to continue pursuing their associate's and bachelor's degrees and beyond," said Charles McKinny, DMC dean of Business, Industrial and Public Safety Education.

- Campus: West
- Size: 24,000 gross square feet
- Estimated cost: \$8,700,000
- Final cost: Project in progress
- Estimated completion/occupancy date: 1/2/19
- Architect: Gignac & Associates
- Contractor: Weaver & Jacobs Constructors, Inc.

ESL classes, currently held in a Corpus Christi Independent School District facility a few miles away, will likewise benefit from the new location in the middle of the West Campus.

The consolidated location creates a special pipeline to the Career Pathways program, which enables GED students to secure marketable certifications while simultaneously earning their high school equivalency certificates. Welding, process technology, heating, ventilation and air conditioning (HVAC) and certified nurse aide (CNA) are some of the certifications that are offered through Career Pathways.

In-demand careers

The building will provide a third healthcare lab for DMC's CNA program. CNAs are in demand in hospitals, long-term nursing facilities and mental health settings, where they care for patients and residents. Employment opportunities for CNAs are predicted to grow more than 30 percent, according to the Texas Workforce Commission.

The healthcare lab will include beds, mannequins and all the elements of a long-term care facility. While students can enter the workforce with CNA certification, it is also a prerequisite for DMC's stenography, echocardiography and nursing programs.

Another signature feature of the ETB Expansion is the robotics lab.

"The robotics lab is the beginning of a career pathway into advanced, high-tech engineering trades, mechatronics and advanced manufacturing," said Dr. Shannon Ydoyaga, DMC dean of Health Sciences and Professional Education. "It will also bring more of a pre-engineering component to the West Campus."

Robotics refers to automated, robotic manufacturing of products that require precise calibration to function in a highly complex environment.

Students enrolled in DMC's Engineering Technology and Computer Science programs will be exposed to the cutting-edge lab, which includes small, simple robots designed for teaching robotics principles and large, industrial manufacturing robots designed for workforce training.



One-stop shop

Learning resources that directly impact student success will be provided in the Academic Learning Center, a one-stop shop on the first floor of the ETB Expansion. The Center will consolidate and replicate resources available to students on the East Campus, such as the Stone Writing Center, Math Learning Center and Student Success Center.

The ETB Expansion is designed with elements that create a sense of community, such as student

collaboration areas with seating outside the east and west entrances. A second-floor student area will overlook the nearby Health Sciences buildings, and a glass stairwell tower will overlook the south side of the campus.

Amenities for a healthy lifestyle are included in the Wellness Center. Treadmills, motion trainers, a stationary bike, dumbbells, kettlebells and other fitness equipment will be available any time of the day. The space also contains men's and women's locker rooms with showers and changing facilities.

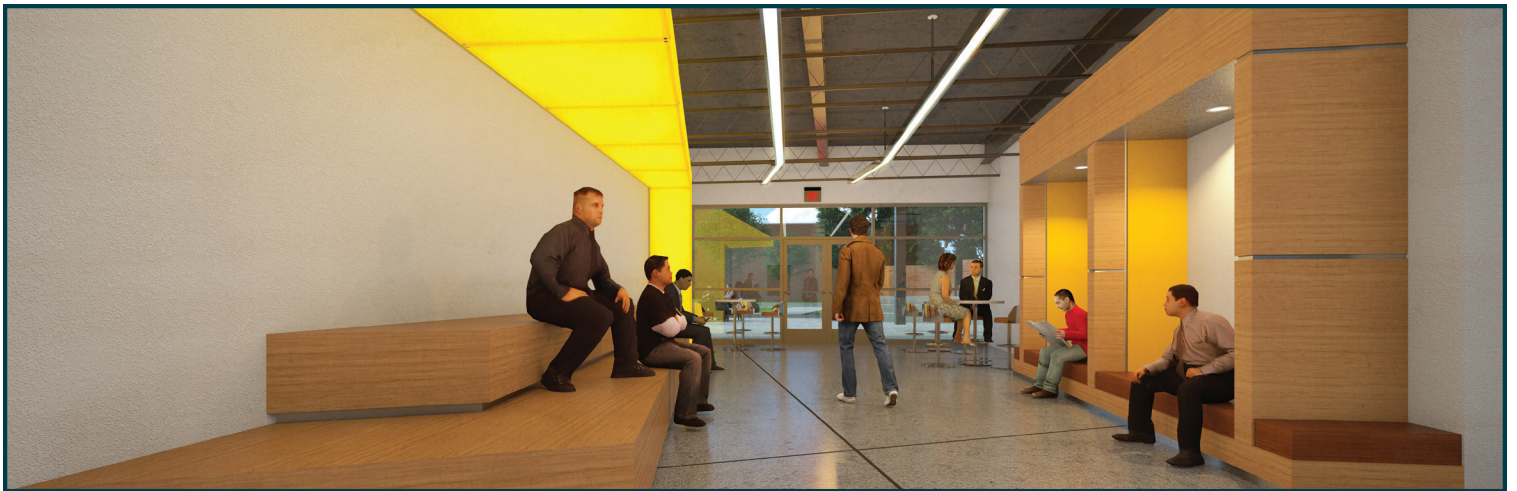


Addressing DMC's increasing enrollment in distance learning, or online courses, the ETB Expansion will also house an E-Learning office. The office expands capabilities for providing video conferencing and a synchronous teaching environment, meaning instructors can meet in real time with students who are at remote locations.



Fun facts:

- Classroom spaces in the facility are better described as learning labs because they will feature cutting-edge, modular furniture and smartboards that can be moved around for a collaborative learning setting. The instructor can be in the middle or front of the room, depending on what works best for the class.
- The GED program will be delivered with block scheduling, in which students are taught different subjects in different time periods. This departure from teaching multiple subjects in one class session will add structure to the program and contribute to student success.
- The robotics lab includes three state-of-the-art industrial robots that cost more than \$200,000 combined. One is an electric welding robot like those used in industrial manufacturing.
- Robots are playing an increasing role in our daily lives, and their use is expanding in industrial manufacturing. DMC's Engineering Technology and Computer Science programs introduce students to the robotics lab and can lead to rewarding careers in robotics technologies and engineering.



www.delmar.edu
361.698.1200

